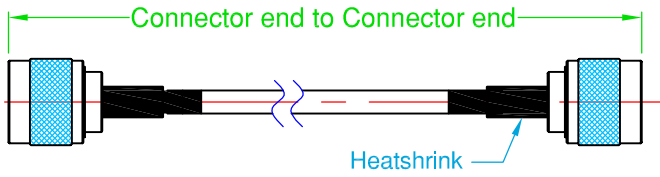


# ZCG Scalar: Measuring Guide for Cable Assembly Orders

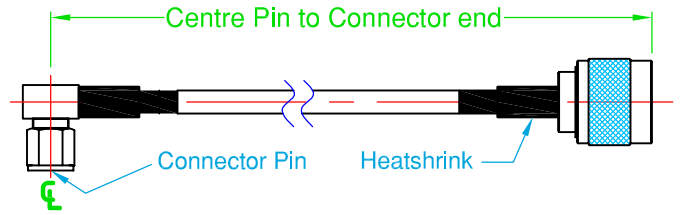
Use the following Cable Assembly examples as a guide  
 - look at the Connector type/s you require to determine  
 where to measure from for final Cable Assembly length



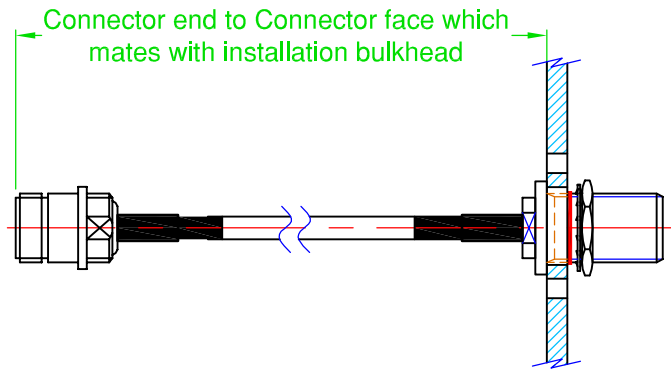
• **Straight Connector to Straight Connector**



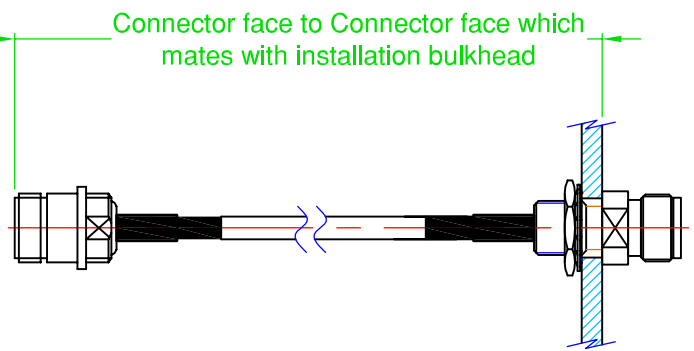
• **Right Angle Connectors and Straight Connectors**



• **Straight Connectors and Bulkhead type Connectors with external Nut**



• **Straight Connectors and Bulkhead type Connectors with internal Nut**



**Important Notes:**

1. Connector Manufacturers differ in their Connector dimensions - this is accounted for in the ZCG Cable Assembly Measuring guide.
2. Other dimension requirements by prior arrangement.
3. At times, ZCG Scalar will submit a ZCG drawing for final Client Approval.
4. Cable Assemblies will be dispatched in Standard Packaging unless other packaging requirements have been made by prior arrangement.

Cable Assembly Tolerances		
Assembly Length	Standard Tolerances	Notes
300mm or less	+1.0 / -0.0	Customer defined tolerances by prior arrangement
300 - 1000mm	+ 3.0 / -0.0	Customer defined tolerances by prior arrangement
Greater than 1000mm	+10.0 / -0.0	Connectors fitted to cut Cable length as listed in Purchase Order

Fill out this section for Cable Assembly order:

Connector Type No. 1:  
 \_\_\_\_\_  
 Male      Female      Other

Connector Type No. 2:  
 \_\_\_\_\_  
 Male      Female      Other

Cable Type:  
 \_\_\_\_\_  
 Assy. Length \_\_\_\_\_ mm

**NOTES:**