

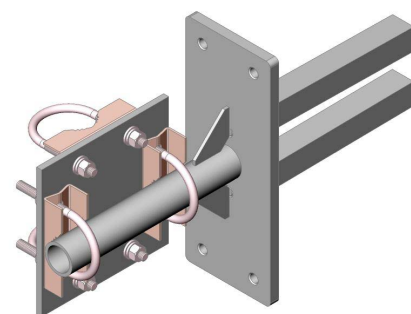
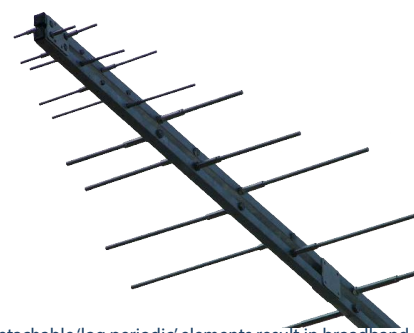
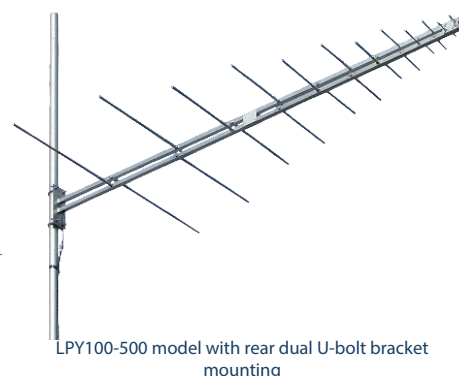
LPY100 Series

Directional broadband VHF & UHF log periodic antennas
VHF & UHF 100-500 MHz or VHF & UHF 100-800 MHz

For applications requiring genuine broadband coverage across the VHF & UHF frequency range 100-500 MHz, the LPY100-500 log periodic antenna offers the ideal solution. For 100-800 MHz capability see the LPY100-800SS.

Mounting hardware, coaxial feeder cable, connectors and other installation accessories are all available separately.

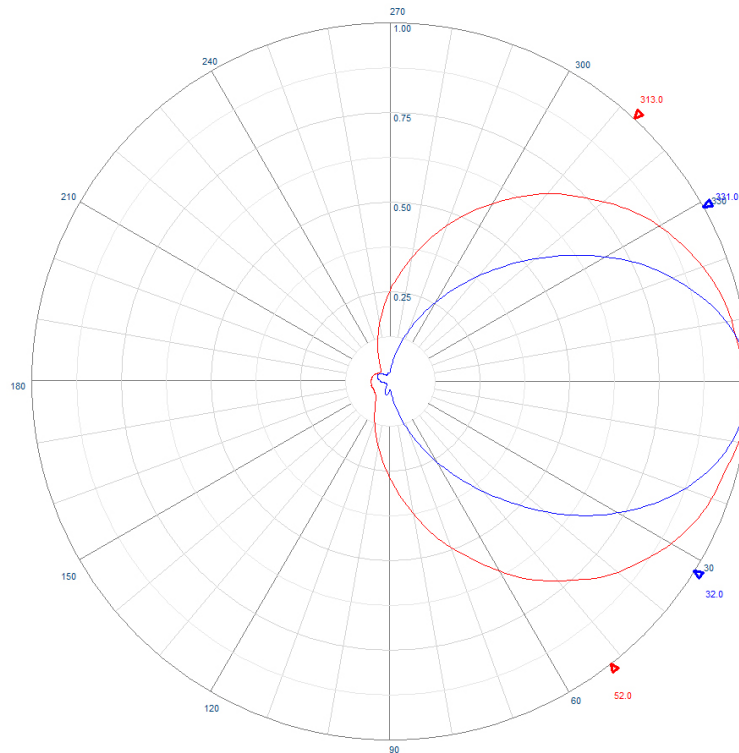
| SKU | | LPY100-500 | LPY100-800SS |
|----------------------------------|------------------------------|--|--|
| Construction | | Aluminium booms, detachable elements and mounting bracket, or add SS for 304 grade stainless steel construction - specify on order | 304 grade stainless steel booms, detachable elements and mounting bracket, external coaxial cable and tri-metal plated termination |
| Frequency range | | 100-500 MHz - VHF & UHF | 100-800 MHz - VHF & UHF |
| Bandwidth | | Full frequency range stated | |
| VSWR | | <2:1 | |
| Tuning | | Factory | |
| Gain | | 7 dBi | |
| Maximum power | | 200 Watts | |
| Impedance - nominal | | 50 Ohms | |
| Polarisation | | Mount horizontal or vertical as required | |
| H Plane | | 105° - 142° depending on frequency | |
| E Plane | | 43° - 75° depending on frequency | |
| Front-to-back ratio | | 7 dB - 15 dB depending on frequency | |
| DC grounding | | Yes | |
| Connector | | N-type female fitted to 200mm RG142 cable as standard, or specify termination requirements | |
| Boom length | | 2.5 metres + spigot | 2.577 metres + spigot |
| Longest element | | 1.5 metres | |
| Weight | Aluminium Stainless steel | 3.8kg 6.9kg | 4.1kg 8.0kg |
| Projected area | | 0.104m ² | 0.185m ² |
| Wind load at 160kph | | 12.5kg, 0.123kN | 22.357kg, 0.219kN |
| Mounting hardware order separate | | Support Strut kit: 1 x YS1-100 - highly recommended Aluminium: 1 x Y2300, Y2300-L or Y2300-XL Stainless steel 1 x Y2300SS, Y2300SS-L or Y2300SS-XL | |
| Installation tools required | | Stainless steel tommy bar for securing elements | |



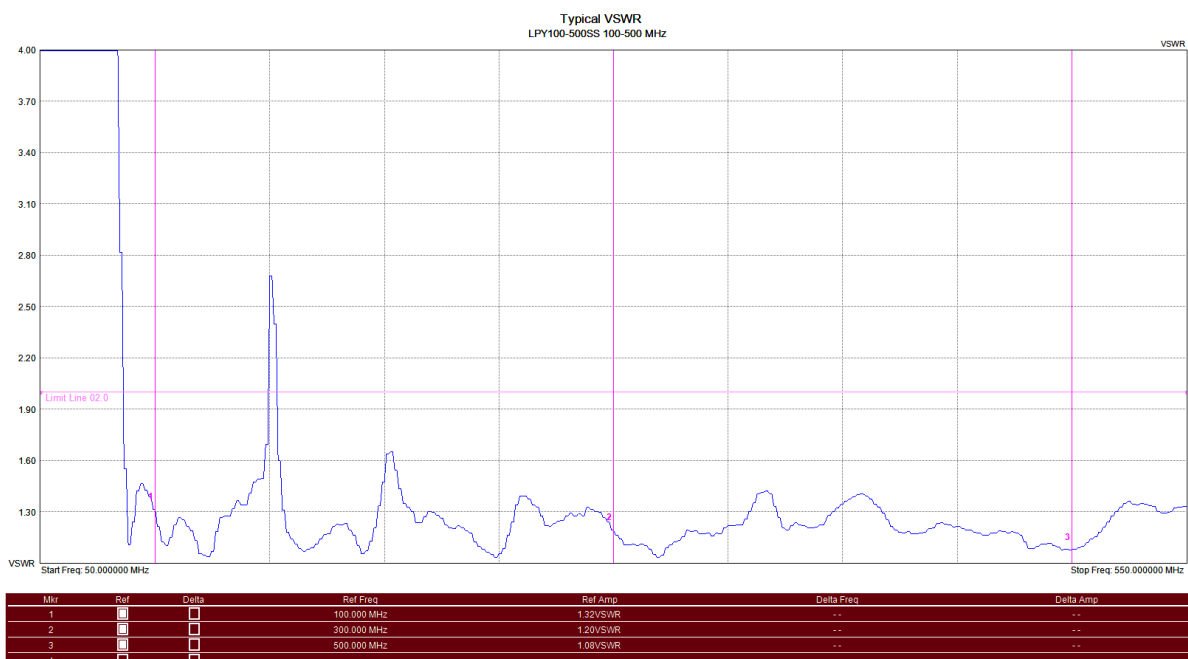


LPY100 Series

Directional broadband VHF & UHF log periodic antennas
VHF & UHF 100-500 MHz or VHF & UHF 100-800 MHz



Example radiation pattern - LPY100-150



Typical Return Loss - LPY100-150

LPY100 Series

Directional broadband VHF & UHF log periodic antennas
VHF & UHF 100-500 MHz or VHF & UHF 100-800 MHz



Suitable mounting hardware

| | |
|---|--|
|  <p>SKU: Y2300 galvanised steel SKU: Y2300-SS stainless steel</p> <p>Right-angle for 32-50mm round 30-50mm mount pole</p> |  <p>SKU: Y2300-L galvanised steel SKU: Y2300SS-L stainless steel</p> <p>Right-angle for 32-50mm round 40-75mm mount pole</p> |
|  <p>SKU: Y2300-XL galvanised steel SKU: Y2300SS-XL stainless steel</p> <p>Right-angle for 32-50mm round 40-75mm mount pole</p> |  <p>SKU: C-125 304 stainless steel right-angle mount clamp 32-50mm round boom 100-120mm mount pole</p> |



SKU: SRF-2.5
2.5 metre strut support with 90 degree offset lugs
Requires UV1-SS + M8 bolt

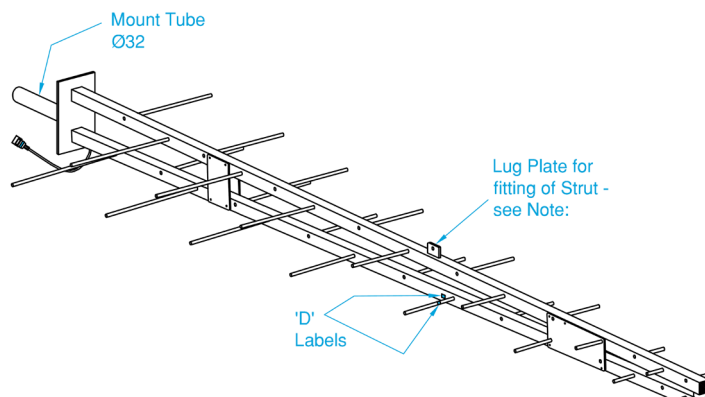
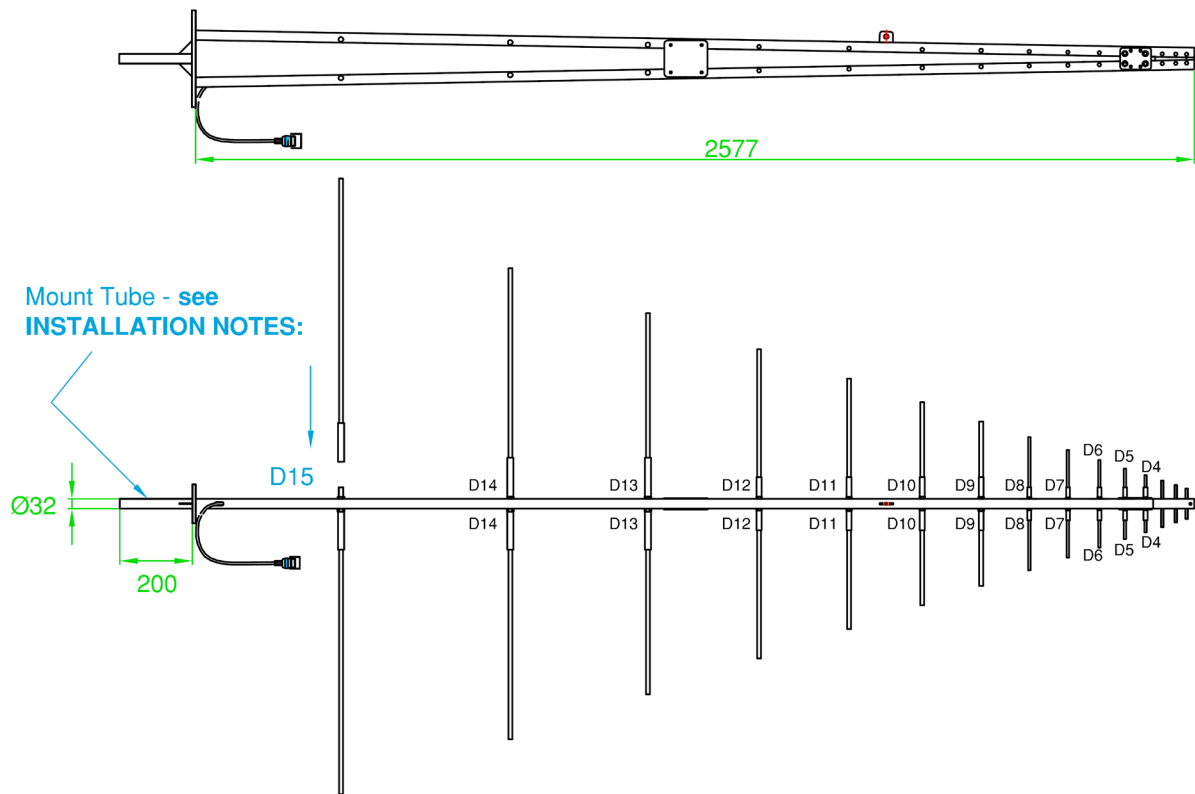
Suitable feeder coaxial cable and connectors

| | |
|---|---|
|  <p>RU400 low loss, solid copper core, foam dielectric cable SKU: 7890 Ultra flexible SKU: 7890-2 Available in 100m, 300m or 500m (UF only) roll or alternatively request a custom cable assembly</p> |  <p>N-type male solder pin crimp connector for RU400 / RU400-UF coaxial cable SKU: NM-8226 Tri-metal plated - Low P.I.M.</p> |
|  <p>1/2" corrugated shielding, foam dielectric coaxial cable SKU: ZCG1250 Air dielectric. SKU: ZCG1250-A Helical super flex. SKU: ZCG1250SF Available in per metre (excl. Air) or 500m rolls or alternatively request a custom cable assembly</p> |  <p>N-type male clamp connector for 1/2" flexible, corrugated shielded, coaxial cable SKU: NM1250 Super flex. SKU: NM1250SF Tri-metal plated - Low P.I.M.</p> |
|  <p>7/8" corrugated shielding, foam dielectric coaxial cable SKU: ZCG7850 Air dielectric. SKU: ZCG7850-A Available in per metre (excl. Air) or 500m rolls or alternatively request a custom cable assembly</p> |  <p>N-type male clamp connector for 7/8" flexible, corrugated shielded, coaxial cable SKU: NM7850 Tri-metal plated - Low P.I.M.</p> |



LPY100 Series

Directional broadband VHF & UHF log periodic antennas
VHF & UHF 100-500 MHz or VHF & UHF 100-800 MHz



ASSEMBLY NOTES:

1. Director Elements are labelled D15 to D4
2. The Antenna has two of each Director: 2 x D15, 2 x D14 .. and so on
3. Apply a small amount of Connection Jointing Paste to each Boom Bolt
4. Attach each Director to its corresponding Label position on the Boom
5. Use the supplied Tommy Bar to tighten each Director
6. D3 to D1 Directors are pre-welded to the Boom

N.B. INSTALLATION NOTES:

1. Recommended Clamp Y2300SS-XL for mounting to a Ø60 to Ø90 pole.
2. It is recommended to install Antenna with a RF2.5 Strut Kit - purchase separately.
3. Drain holes must face downwards.