



Y1000 Series 12.7mm Yagi's

High gain 12.7mm square boom aluminium Yagi's

UHF 1090-1620 MHz

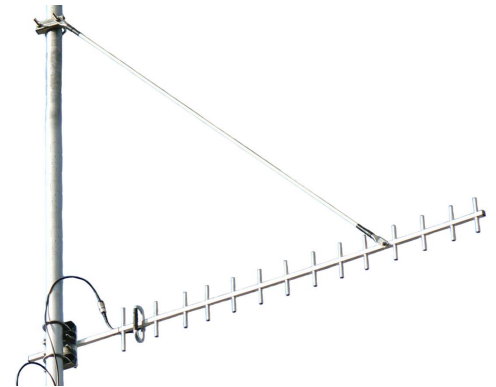


The Y1 series of 12.7mm RHS Yagi's are specifically designed and manufactured for highly directional applications in the UHF frequency range 1150-1620 MHz. Suitable for highly directional links or data transfer.

Please note: The Y1000 series below require an A-12 mounting clamp and will not fit into ZCG's standard range of Yagi mounting clamps.

Mounting hardware, coaxial feeder cable, connectors and other installation accessories are all available separately.

	Y1115	Y1215	Y1315
Construction	Welded corrosion resistant aluminium boom, elements, dipole with external coaxial cable and termination		
Frequency range	ADS-B 1090 MHz	C/F UHF 1200 MHz 1150-1250 MHz	C/F UHF 1300 MHz 1250-1350 MHz
Bandwidth	Full specified frequency range		
VSWR	<1.5:1		
Tuning	Factory		
Gain	14 dBd		
Polarisation	Mount horizontal or vertical as required		
Maximum power	125 Watts		
Impedance	50 Ohms		
H Plane	28°		
E Plane	30°		
DC grounding	Yes		
Connector - fitted	N-type female		
Boom dimensions	12.7mm x 1.35m		12.7mm x 1.3m
Longest element	132mm		129mm
Weight	1.5kg		
Projected area	0.038m ²		
Wind load at 160kph	4.63kg, 0.04kN		
Mounting hardware order separate	1 x A12-7 for up to 50mm capable mount pole + strut kit, consult ZCG for suitable strut options.		
Mounting position recommended	Ensure the antenna is clear from obstructions or other installed antennas. If vertical polarisation, ensure drain hole faces down.		



N-type female fitted as standard or specify requirements



Y1000 Series 12.7mm Yagi's

High gain 12.7mm square boom aluminium Yagi's

UHF 1090-1620 MHz



The Y1 series of 12.7mm RHS Yagi's are specifically designed and manufactured for highly directional applications in the UHF frequency range 1150-1620 MHz. Suitable for highly directional links or data transfer.

Please note: The Y1000 series below require an A-12 mounting clamp and will not fit into ZCG's standard range of Yagi mounting clamps.

Mounting hardware, coaxial feeder cable, connectors and other installation accessories are all available separately.

	Y1515	Y1615
Construction	Welded corrosion resistant aluminium boom, elements, dipole (enclosed Y1615) with external coaxial cable and termination	
Frequency range	UHF 1420-1520 MHz	UHF 1520-1620 MHz
Bandwidth	Full specified frequency range - 100 MHz	
VSWR	<1.5:1	
Tuning	Factory	
Gain	14 dBd	
Polarisation	Mount horizontal or vertical as required	
Maximum power	125 Watts	
Impedance	50 Ohms	
H Plane	28°	27°
E Plane	30°	29°
DC grounding	Yes	
Connector - fitted	N-type female	
Boom dimensions	12.7mm x 1.4m	12.7mm x 980mm
Longest element	105mm	90mm
Weight	1.35kg	1.2kg
Projected area	0.035m ²	0.033m ²
Wind load at 160kph	4.01kg, 0.04kN	3.98kg, 0.039kN
Mounting hardware order separate	1 x A12-7 for up to 50mm capable mount pole or consult ZCG for large capable options.	
Mounting position recommended	Ensure the antenna is clear from obstructions or other installed antennas. Mount the Yagi with the dipole enclosure on the top - applies to Y1615 model only.	

Y1215 / Y1315 & Y1515

Y1615



N-type female fitted as standard or specify requirements



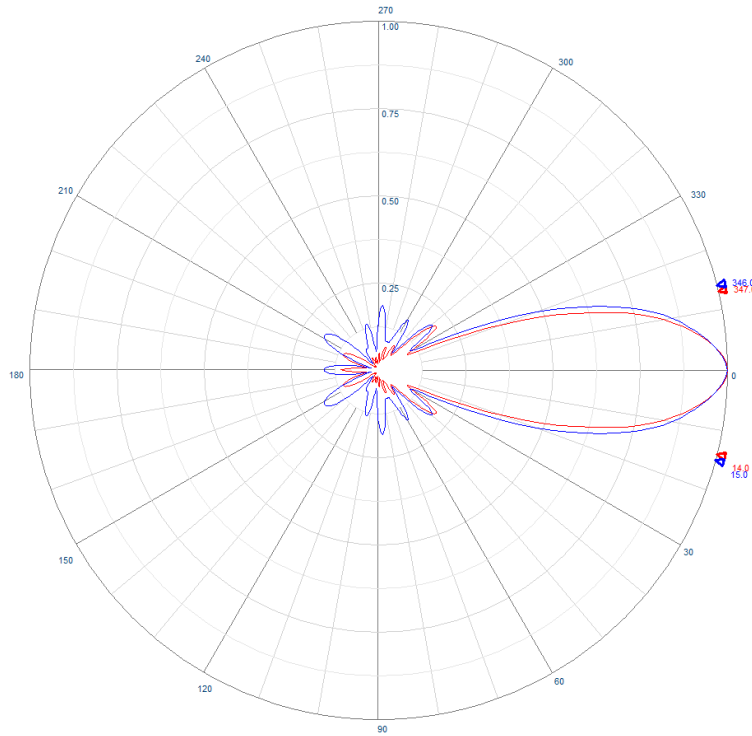
Radome enclosed radiating dipole on top of Yagi - Y1615 model only



Y1000 Series 12.7mm Yagi's

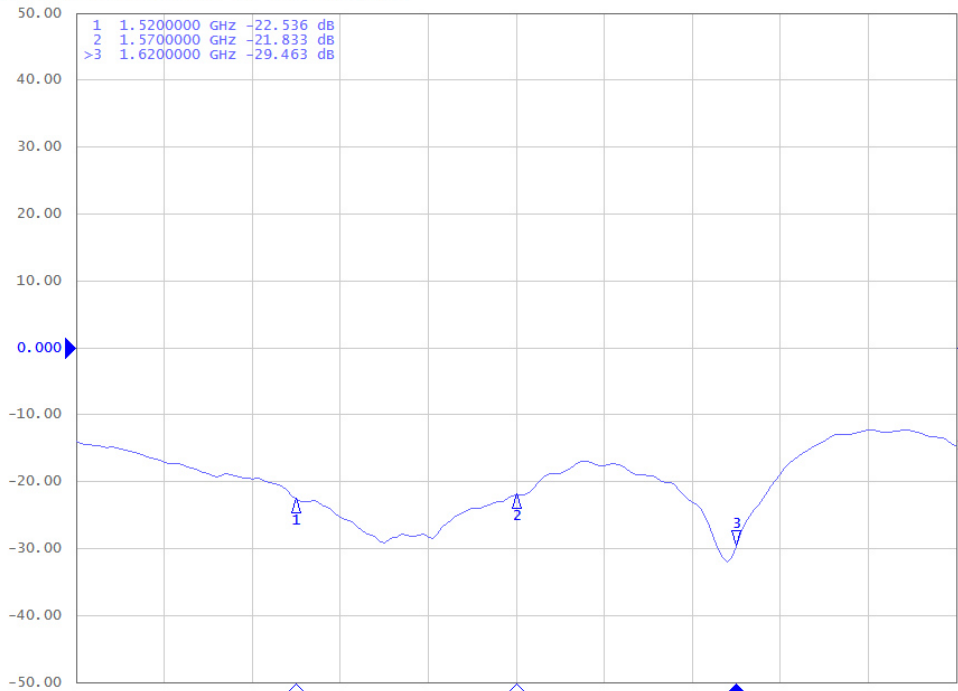
High gain 12.7mm square boom aluminium Yagi's

UHF 1090-1620 MHz



Example radiation pattern - Y1615

▶ **[F1]** S11 Log Mag 10.00 dB/ Ref 0.000 dB [F1 M]



Typical return loss - Y1615



Y1000 Series 12.7mm Yagi's

High gain 12.7mm square boom aluminium Yagi's

UHF 1090-1620 MHz



Suitable mounting hardware

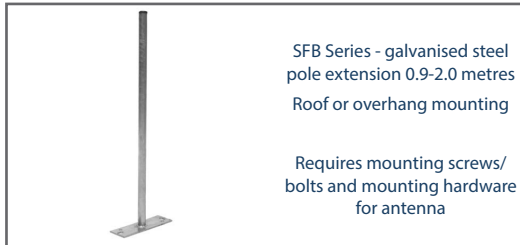


A12-7 - aluminium and galvanised steel
Right-angle for 12.7mm RHS
30-50mm mount pole



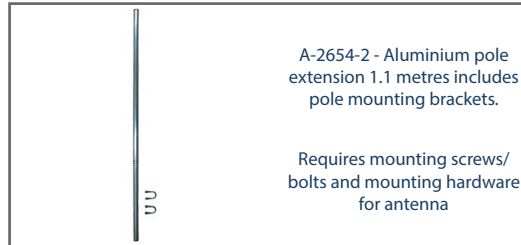
CFB series - Galvanised steel 'J'
hockey stick brackets, 1.1 - 2.1
metres.

Requires mounting screws/
bolts and mounting hardware
for antenna



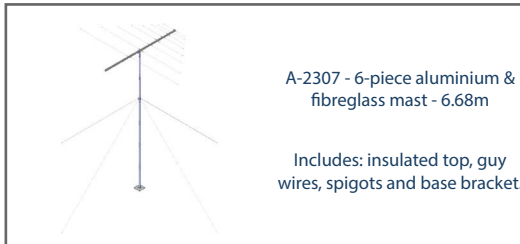
SFB Series - galvanised steel
pole extension 0.9-2.0 metres
Roof or overhang mounting

Requires mounting screws/
bolts and mounting hardware
for antenna



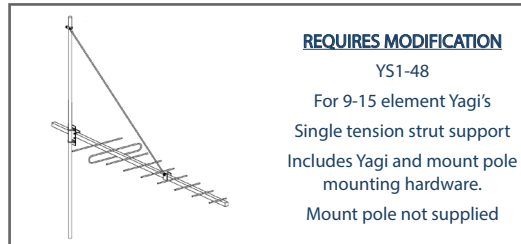
A-2654-2 - Aluminium pole
extension 1.1 metres includes
pole mounting brackets.

Requires mounting screws/
bolts and mounting hardware
for antenna



A-2307 - 6-piece aluminium &
fibreglass mast - 6.68m

Includes: insulated top, guy
wires, spigots and base bracket.



REQUIRES MODIFICATION

YS1-48

For 9-15 element Yagi's
Single tension strut support
Includes Yagi and mount pole
mounting hardware.
Mount pole not supplied

Suitable feeder coaxial cable



RU400 Solid copper conductor,
low loss coaxial cable
CNT-400 / LMR-400™ equivalent
(* times microwave)
P/N 7890

Available in 100m, 300m, 500m
roll or alternatively request a
custom cable assembly



N-type male crimp connector
for RU400 low loss, solid
conductor

P/N 8226

Tri-metal plated



1/2" super flexible helical
shielded, foam dielectric
coaxial cable
P/N ZCG1250SF

Available in per metre, 500m
roll or alternatively request a
custom cable assembly



N-type male clamp connector
for 1/2" super flexible, helical
shielded coaxial cable

P/N NM1250SF

Tri-metal plated



1/2" corrugated shielding,
foam dielectric coaxial cable
P/N ZCG1250

Available in per metre, 500m
roll or alternatively request a
custom cable assembly



N-type male clamp connector
for 1/2" flexible, corrugated
shielded, coaxial cable

P/N NM1250

Tri-metal plated