



Y715-RW & Y720-RWL

All carriers 4G LTE and 4G round boom Yagi antenna
4G LTE 698-800 MHz & lower 4G 825-890 MHz



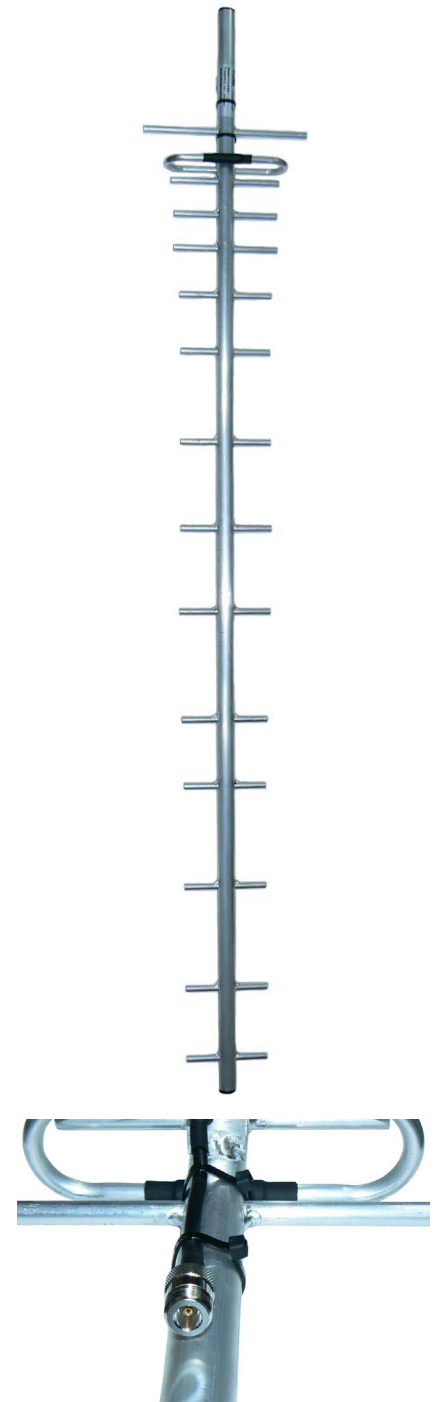
The Y715-RW 15 element and Y720-RWL round boom Yagi antennas are designed and manufactured for optimum performance across the 4G LTE and lower 4G mobile phone frequency range 698-890 MHz. Suitable for both mobile phone improvement and data transmit and receive.



Key Features:

- Wide band coverage from 698 to 890 MHz for 4G LTE & lower 4G
- All welded construction for reliability
- Excellent front-to-back ratio
- Designed to minimize the generation of P.I.M.
- Marine Grade Aluminium
- DC Grounding

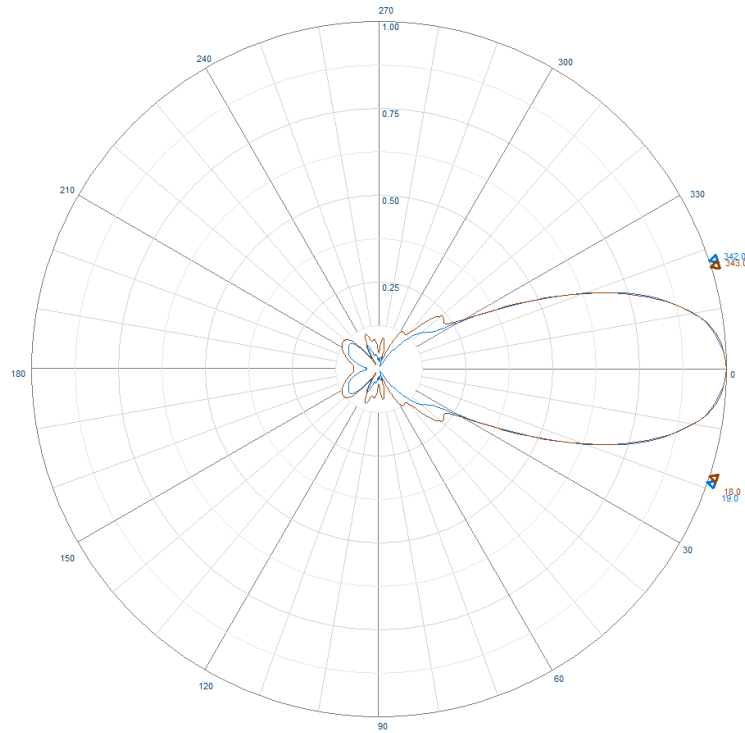
SKU	Y715-RW	Y720-RWL
Construction	Welded corrosion resistant aluminium boom, elements and folded dipole with external cable and connector	
Frequency range	698-890 MHz - All carriers 4GLTE + lower 4G <small>Lower 4G 825-890 MHz - within Australia</small>	
Tuning	Factory	
VSWR	<1.8:1 across frequency range	
Number of elements	15	20
Gain - nominal	13 dBd	15 dBd
Polarisation	Mount horizontal or vertical as required	
Maximum power	100 Watts	
Impedance	50 Ohms - nominal	
H Plane at 3dB	37°	27°
E Plane at 3dB	43°	28°
Front-to-back ratio	20dB	
Connector and cable	N-type female fitted to 115mm RG59 cable tail	N-type female fitted to 400mm external cable
Boom length	1.55 metres x 25mmø	2.36 metres x 25mmø
Longest element	235mm	214mm
Weight	750grams	1kg
Projected area	0.040m ²	0.060m ²
Wind load at 160kph	0.04kN, 4.792kg	0.071kN, 7.254kg
Mounting hardware order separate	1 x RB8/RB8-L or A48-R clamp + YS1-48 strut kit	



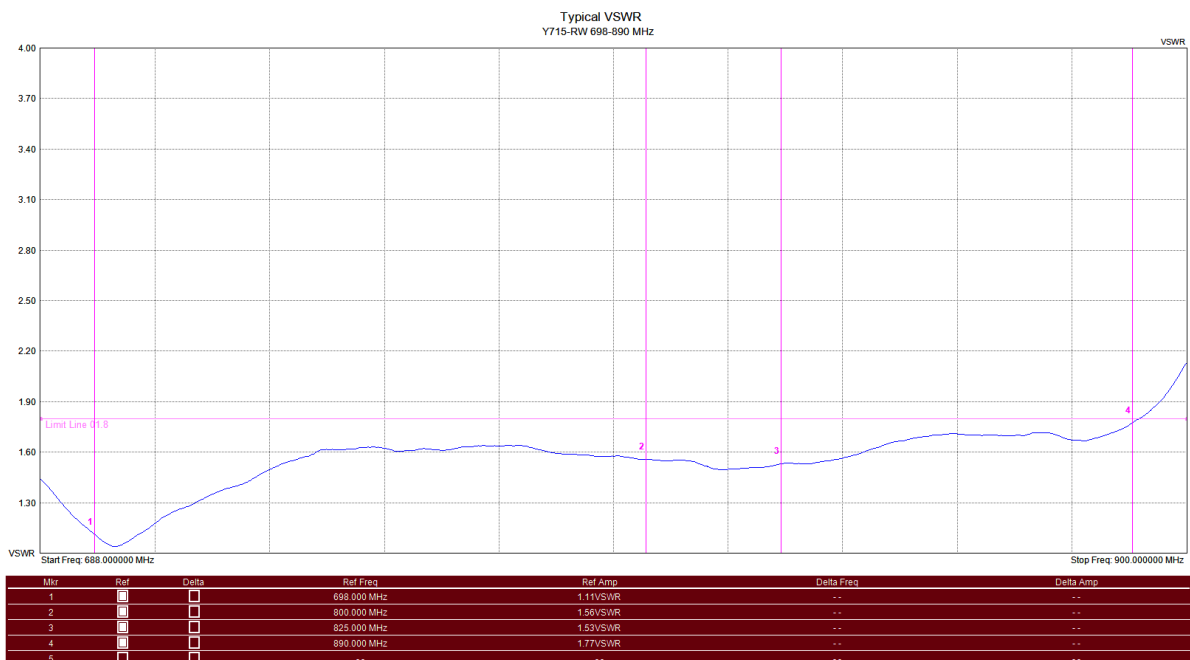


Y715-RW & Y720-RWL

All carriers 4G LTE and 4G round boom Yagi antenna
4G LTE 698-800 MHz & lower 4G 825-890 MHz



Example radiation pattern



Typical VSWR



Y715-RW & Y720-RWL

All carriers 4G LTE and 4G round boom Yagi antenna
4G LTE 698-800 MHz & lower 4G 825-890 MHz



Suitable mounting hardware



SKU: CFB** series**
Galvanised steel 'J' hockey stick brackets, 1.1 - 2.7 metres.

Requires A-4266 series + 2 x EB1-SS or 1 x UB2-SS



SKU: SFB** Series**
Galvanised steel pole extension
0.9-2.7 metres
Roof or overhang mounting

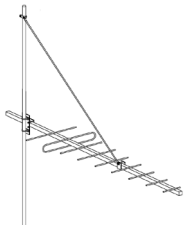
Requires A-4266 + 2 x EB1-SS or 1 x UB2-SS



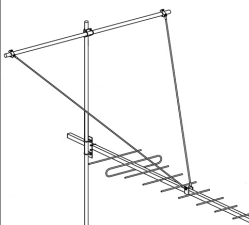
NBS Masts & Accessories
- Aluminium telescopic masts
- Tilt-over masts
- Lattice section masts
www.nbsmasts.com.au
[Contact us for more info.](#)



SKU: A48-R
Galvanised steel
Right-angle for 25mm round
30-50mm mount pole



SKU: YS1-48
For 9-15 element Yagi's
Single tension strut support
Includes Yagi and mount pole mounting hardware.
Mount pole not supplied



SKU: YS2-48
For 9-15 element Yagi's
Dual tension strut support
Includes Yagi clamp, support boom, pole mounting hardware.
Mount pole not supplied

Suitable feeder coaxial cable and connectors

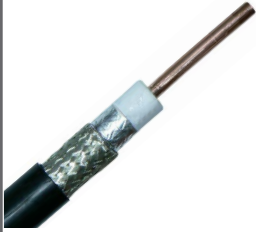


SKU: 7890
RU400 Solid copper conductor, low loss coaxial cable
CNT-400 / LMR-400™ equivalent
(* times microwave)

SKU: 7890-3 - RU400-UF ultra flexible
Available in 100m, 300m, 500m roll or alternatively request a custom cable assembly



SKU: NM-8226
N-type male crimp connector for RU400 low loss, solid conductor
Tri-metal plated



SKU: 7890-2
RU600 Solid copper conductor, low loss coaxial cable
CNT-600 / LMR-600™ equivalent
(* times microwave)

Available in 500m roll or alternatively request a custom cable assembly



SKU: NM-8226-2
N-type male crimp connector for RU600 low loss, solid conductor
Tri-metal plated



SKU: ZCG1250
1/2" corrugated shielding, foam dielectric coaxial cable

SKU: ZCG1250-A - Air dielectric
Available in per metre, or 500m rolls or alternatively request a custom cable assembly



SKU: NM1250
N-type male clamp connector for 1/2" flexible, corrugated shielded, coaxial cable
Tri-metal plated