



Y715-SS

Directional broadband stainless steel square boom Yagi 4G LTE & lower 4G cellular 698-890 MHz

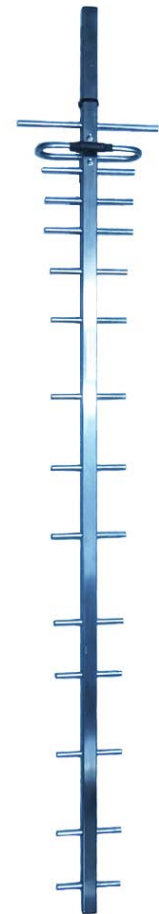


The Y715-SS 15 element square boom Yagi is designed and manufactured for optimum performance across the 4G LTE and lower 4G mobile phone frequency range 698-890 MHz. Suitable for both mobile phone improvement or data transmit and receive/telemetry.

Key Features:

- Wide band coverage from 698~890 MHz for 4G LTE & lower 4G
- High gain for directional applications
- Fully-welded 304 stainless steel construction for increased survivability
- Excellent front-to-back ratio
- DC Grounding

Construction	Fully-welded 304 stainless steel boom, elements and dipole, external cable and termination
Frequency range	698-890 MHz - All networks 4G LTE and lower 4G <u>Lower 4G/3G - All available networks within Australia, international check your carrier/s</u>
Tuning	Factory
VSWR	Better than <1.8:1 698-800 MHz (LTE) Better than <2.2:1 820-890 MHz (lower 4G)
Number of elements	15
Gain - nominal	13 dBd
Polarisation	Mount horizontal or vertical as required
Maximum power	100 Watts
Impedance	50 Ohms - nominal
H Plane at 3dB	37°
E Plane at 3dB	33°
Front-to-back ratio	20dB
Connector and cable	N-type female fitted to 250mm RG59 cable tail - rear exit from dipole assembly
Boom length	1.55 metres
Longest element	350mm
Weight in aluminium	1.1kg
Projected area	0.056m ²
Wind load at 160kph	0.067kn, 6.793kg
Mounting hardware order separate	A48/S48 - 30-50mm capability, S48-76 - 50-76mm capability or S48-90 - 70-90mm capability YS1-48 strut kit recommended



The SHS boom allows for fixed horizontal or vertical orientation no matter the weather utilising a S48 right-angle Yagi clamp - order separately.

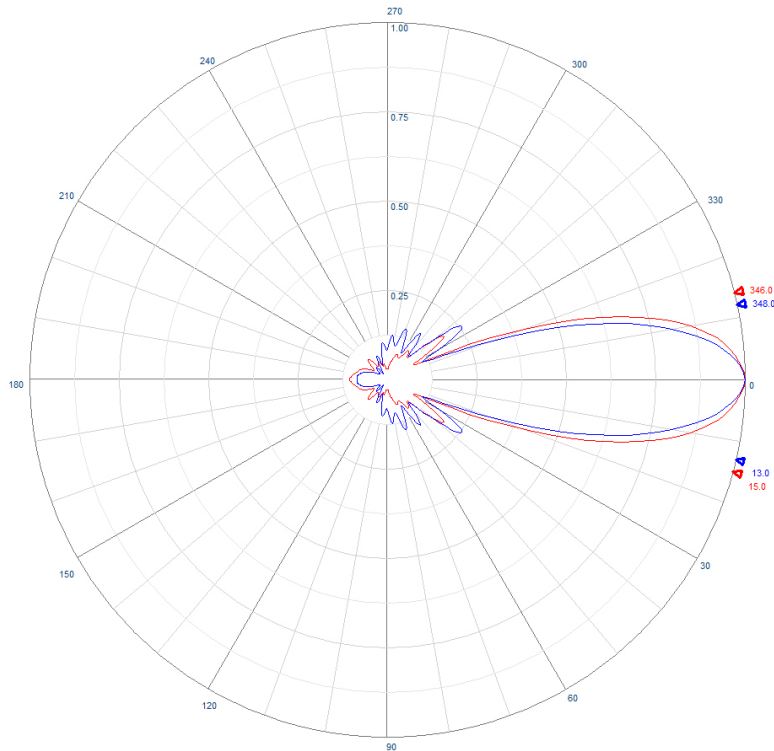


N-type female fitted as standard or specify requirements

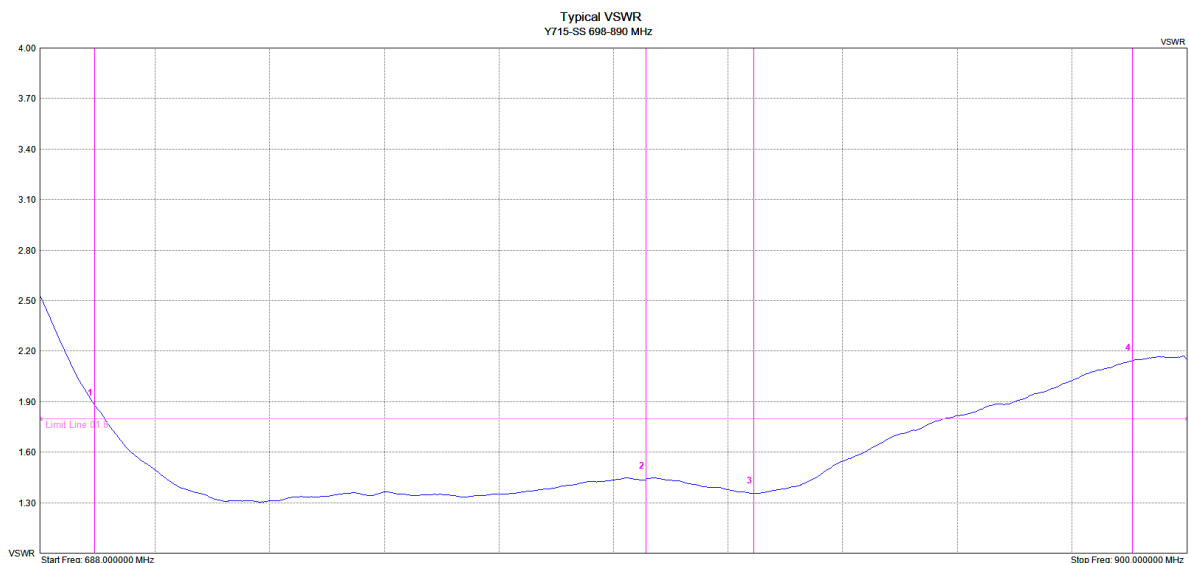


Y715-SS

Directional broadband stainless steel square boom Yagi
4G LTE & lower 4G cellular 698-890 MHz



Example radiation pattern



Mir	Ref	Delta	Ref Freq	Ref Amp	Delta Freq	Delta Amp
1	<input type="checkbox"/>	<input type="checkbox"/>	698.000 MHz	1.88VSWR	--	--
2	<input type="checkbox"/>	<input type="checkbox"/>	800.000 MHz	1.44VSWR	--	--
3	<input type="checkbox"/>	<input type="checkbox"/>	820.000 MHz	1.36VSWR	--	--
4	<input type="checkbox"/>	<input type="checkbox"/>	890.000 MHz	2.14VSWR	--	--
5	<input type="checkbox"/>	<input type="checkbox"/>	--	--	--	--

Typical VSWR



Y715-SS

Directional broadband stainless steel square boom Yagi 4G LTE & lower 4G cellular 698-890 MHz



Suitable mounting hardware

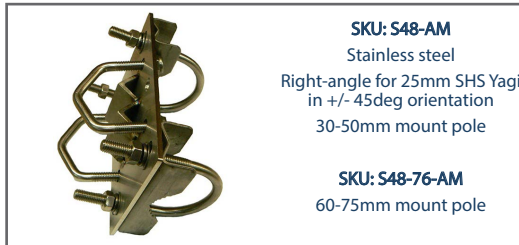


SKU: S48
Stainless steel
Right-angle for 25mm SHS
30-50mm mount pole



SKU: S48-76
Stainless steel
Right-angle for 25mm SHS
60-75mm mount pole

SKU: S48-90
70-90mm mount pole

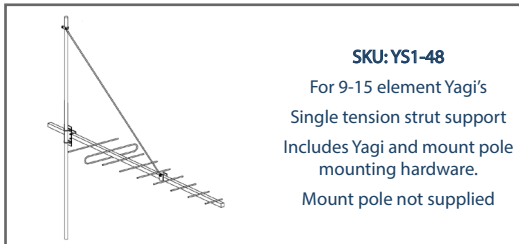


SKU: S48-AM
Stainless steel
Right-angle for 25mm SHS Yagi
in +/- 45deg orientation
30-50mm mount pole

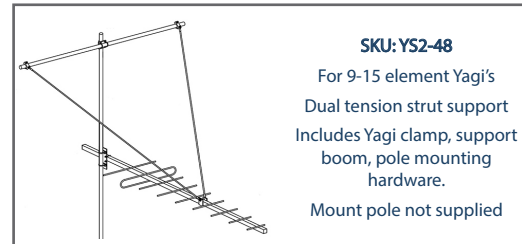
SKU: S48-76-AM
60-75mm mount pole



SKU: S48-tilt
Stainless steel
Right-angle for 25mm SHS
30-50mm mount pole
with 15 deg tilt allowance
Suits angled tower legs



SKU: YS1-48
For 9-15 element Yagi's
Single tension strut support
Includes Yagi and mount pole
mounting hardware.
Mount pole not supplied



SKU: YS2-48
For 9-15 element Yagi's
Dual tension strut support
Includes Yagi clamp, support
boom, pole mounting
hardware.
Mount pole not supplied

Suitable feeder coaxial cable and connectors



RU400 low loss, solid copper
core, foam dielectric cable
SKU: 7890

Ultra flexible SKU: 7890-2
Available in 100m, 300m
or 500m (UF only) roll or
alternatively request a custom
cable assembly



N-type male solder pin crimp
connector for RU400 / RU400-
UF coaxial cable

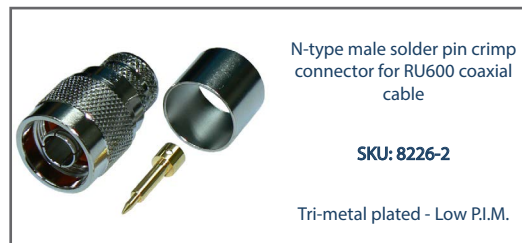
SKU: 8226

Tri-metal plated - Low P.I.M.



RU600 low loss, solid copper
core, foam dielectric cable
SKU: 7890-3

Available in 500m roll or
alternatively request a custom
cable assembly



N-type male solder pin crimp
connector for RU600 coaxial
cable

SKU: 8226-2

Tri-metal plated - Low P.I.M.



1/2" corrugated shielding,
foam dielectric coaxial cable
SKU: ZCG1250

Air dielectric. SKU: ZCG1250-A
Helical super flex. SKU: ZCG1250SF
Available in per metre (excl. Air)
or 500m rolls or alternatively
request a custom cable
assembly



N-type male clamp connector
for 1/2" flexible, corrugated
shielded, coaxial cable

SKU: NM1250

Super flex. SKU: NM1250SF

Tri-metal plated - Low P.I.M.