

Y815B2-DMH-Array

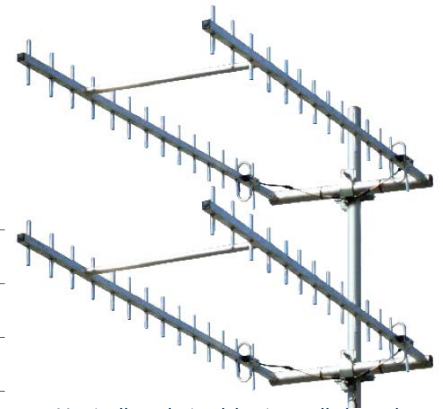
4 Yagi broadband UHF array

UHF / I.S.M. / Mobile Phone 700-960 MHz

Y815B2-DMH Array is a 4-stack Yagi array which produces a highly effective directional radiation pattern with a high front-to-back ratio specifically designed for long distance point-to-point communication links.

Coaxial feeder cable, connectors and other installation accessories are all available separately.

Construction	Fully-welded aluminium booms, dipole and braces x 2
Frequency range	700-960 MHz - LTE, 4G/3G and UHF compatible
Bandwidth	Specify any 60 MHz within band when ordering
VSWR	<1.6:1 across specified bandwidth
Tuning	Factory
Yagi's in array	4 x 15 element Yagi's
Gain - nominal	20dBd
Polarisation	Specify horizontal or vertical Yagi Polarisation and bayed or stacked mounting configuration when ordering
Maximum power	100 Watts
Impedance	50 Ohms
H Plane	8°
E Plane	10°
Front-to-back	20 dB
Cable	Phasing harness supplied
Connector	N-type female fitted to phasing harness or specify requirements
Boom length	1.85 metres
Longest element	210mm
Array weight	12.5kg
Projected area	0.340m
Wind load at 160kph	40kg
Mounting hardware	2 x SRF-DM, 2 x UV1-SS 2 x UAM90L - supplied
Installation tools required	17mm spanner for mount hardware securing



Vertically polarised, horizontally bayed configuration



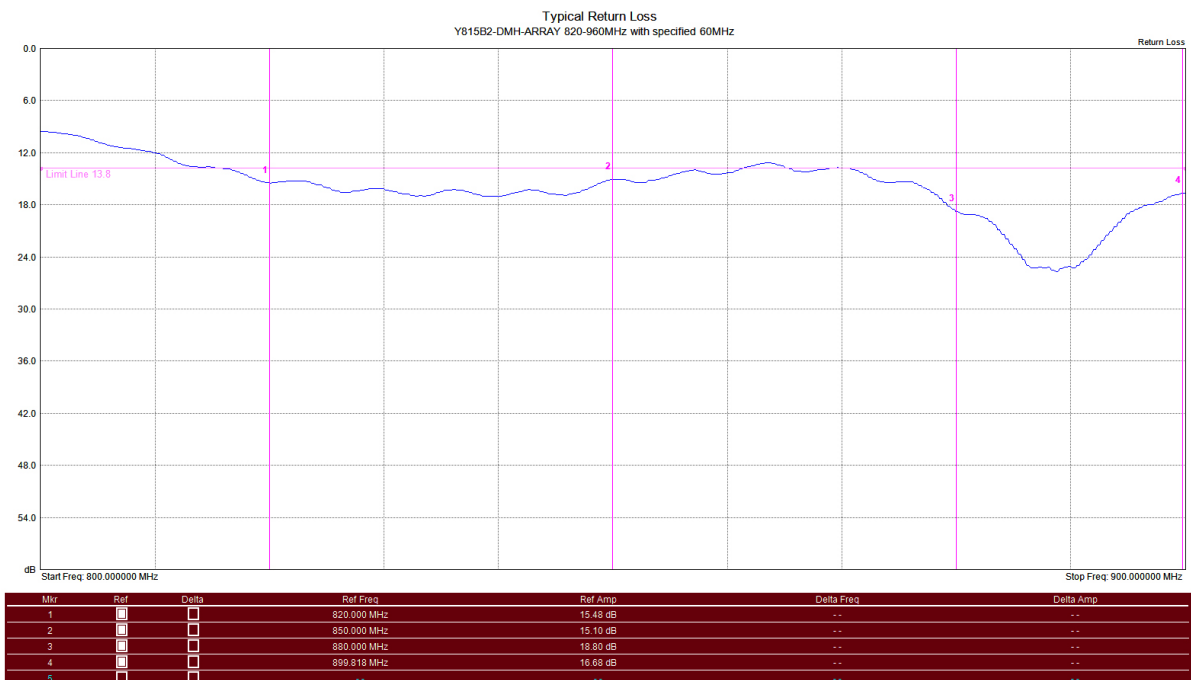
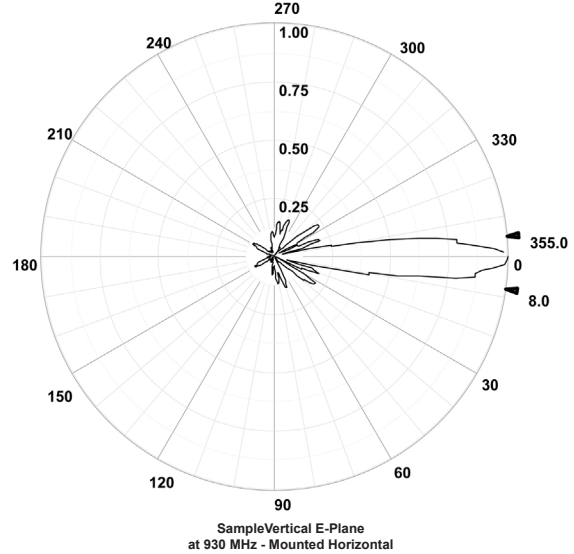
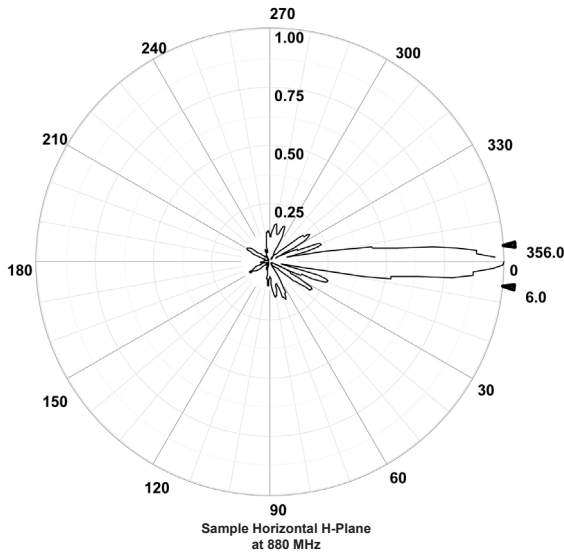
Horizontal polarised, horizontally bayed configuration



Y815B2-DMH-Array

4 Yagi broadband UHF array

UHF / I.S.M. / Mobile Phone 700-960 MHz



Typical Return Loss



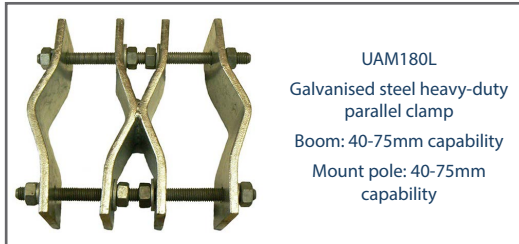
Y815B2-DMH-Array

4 Yagi broadband UHF array

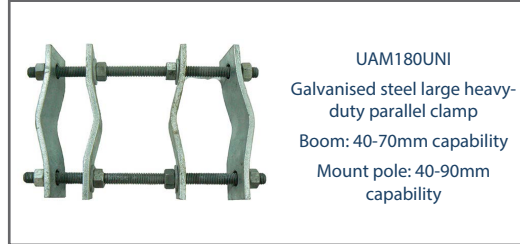
UHF / I.S.M. / Mobile Phone 700-960 MHz



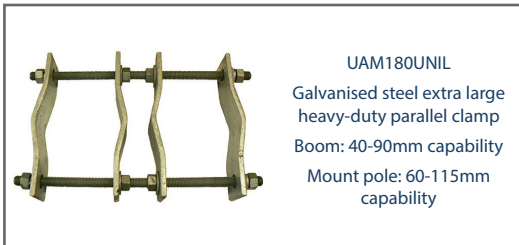
Alternate mounting hardware - order separate



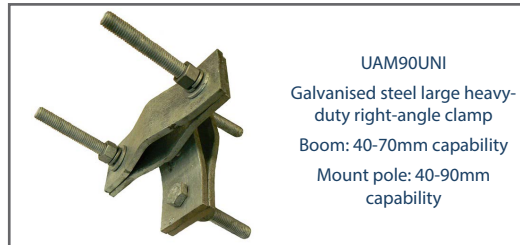
UAM180L
Galvanised steel heavy-duty parallel clamp
Boom: 40-75mm capability
Mount pole: 40-75mm capability



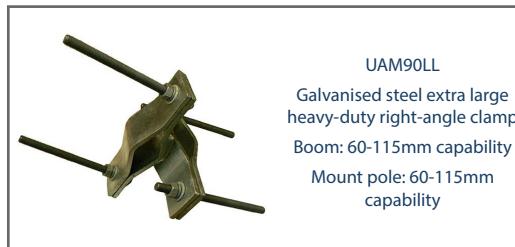
UAM180UNI
Galvanised steel large heavy-duty parallel clamp
Boom: 40-70mm capability
Mount pole: 40-90mm capability



UAM180UNIL
Galvanised steel extra large heavy-duty parallel clamp
Boom: 40-90mm capability
Mount pole: 60-115mm capability



UAM90UNI
Galvanised steel large heavy-duty right-angle clamp
Boom: 40-70mm capability
Mount pole: 40-90mm capability



UAM90LL
Galvanised steel extra large heavy-duty right-angle clamp
Boom: 60-115mm capability
Mount pole: 60-115mm capability

Suitable feeder coaxial cable and connectors



RU400 Solid copper conductor, low loss coaxial cable
CNT-400 / LMR-400™ equivalent
(™ times microwave)
P/N 7890
Available in 100m, 300m or 500m rolls or alternatively request a custom cable assembly



N-type male crimp connector for RU400 low loss, solid conductor
P/N 8226
Tri-metal plated



1/2" super flexible helical shielded, foam dielectric coaxial cable
P/N ZCG1250SF
Available in per metre, or 500m rolls or alternatively request a custom cable assembly



N-type male clamp connector for 1/2" super flexible, helical shielded coaxial cable
P/N NM1250SF
Tri-metal plated



1/2" corrugated shielding, foam dielectric coaxial cable
P/N ZCG1250
Available in per metre, or 500m rolls or alternatively request a custom cable assembly



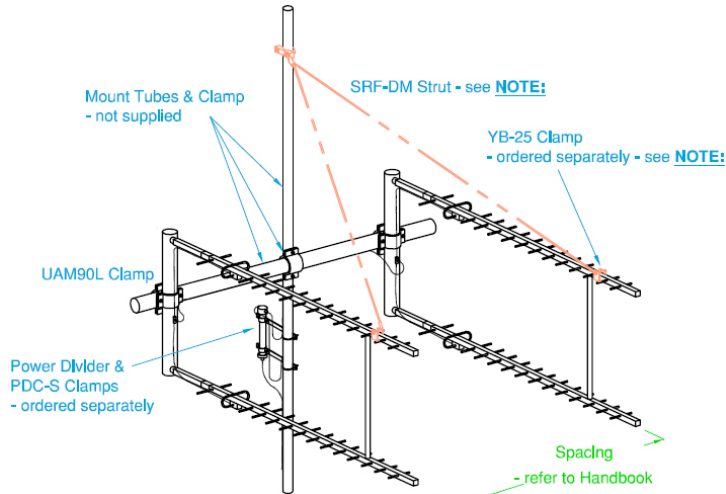
N-type male clamp connector for 1/2" flexible, corrugated shielded, coaxial cable
P/N NM1250
Tri-metal plated



Y815B2-DMH-Array

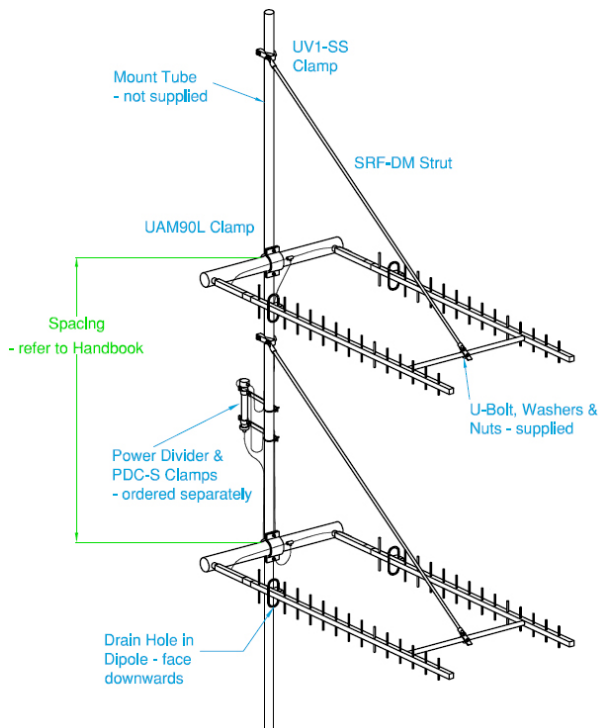
4 Yagi broadband UHF array

UHF / I.S.M. / Mobile Phone 700-960 MHz

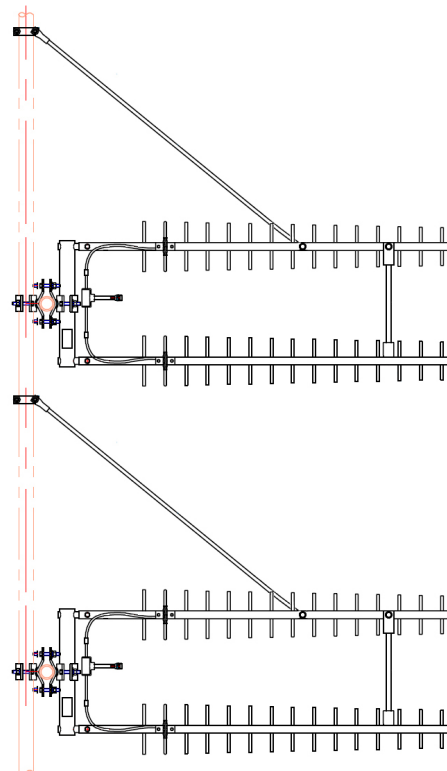


NOTE:
The use of a Strut for this installation is generally not required. The Struts shown in this mounting configuration is for a guide only.

Horizontally polarised Yagi, Vertically stacked in Quad formation configuration
Specify configuration when ordering.



Vertically polarised Yagi, Horizontally bayed in quad formation configuration
Specify configuration when ordering.



Vertically polarised Yagi, Vertically stacked in stacked formation configuration
Specify configuration when ordering.