



Y600 Series Yagi

Square boom custom frequency Yagi Antenna

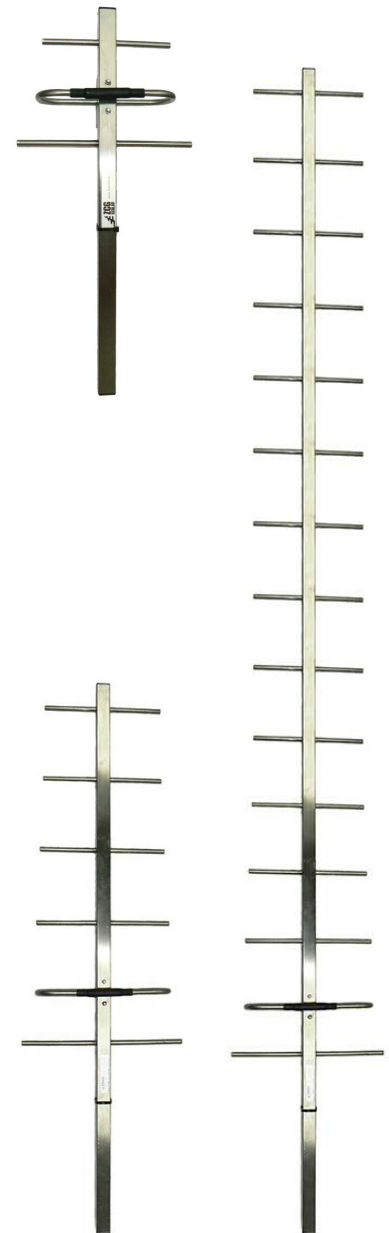
UHF 520-700 MHz



The Y600 series of directional UHF Yagi antennas range from 3 to 15 element configurations to suit all gain requirements and signal propogations.

Mounting hardware, coaxial feeder cable, connectors and other installation accessories are all available separately.

SKU	Y603-SS	Y604	Y606	Y615
Construction	304 grade stainless steel only	Fully-welded corrosion resistant aluminium or 304 grade stainless steel boom, elements and dipole (specify material)		
Frequency range	520-700 MHz - UHF			
Bandwidth	Specify 20 MHz when ordering			
Tuning	Factory			
VSWR	<1.5:1 across specified bandwidth			
Number of elements	3	4	6	15
Gain - nominal	6 dBd	7.5 dBd	9 dBd	14 dBd
Polarisation	Mount horizontal or vertical as required			
Maximum power	150 Watts			
Impedance	50 Ohms			
H Plane at 3 dB	76°	62°	50°	38°
E Plane at 3 dB	57°	54°	46°	33°
Front-to-back ratio	15 dB		16 dB	
Connector	N-type female fitted to 250mm RG59 cable tail			
Boom length at 520 MHz	700mm	1.0m	1.1m	1.9m
Longest element at 520 MHz	288mm	294mm		254mm
Weight in aluminium	-	1.0kg	1.4kg	3.1kg
Weight in stainless steel	1.0kg	1.2kg	1.6kg	3.3kg
Projected area	0.028m ²	0.039m ²	0.058m ²	0.125m ²
Wind load at 160kph	2.0kg	3.0kg	4.0kg	16.0kg
Mounting hardware order separate	Aluminium - 1 x A48 or A48-65 Stainless steel 1 x S48, 1 x S48-76 or 1 x S48-90 1 x YS1-48 recommended for Y615			

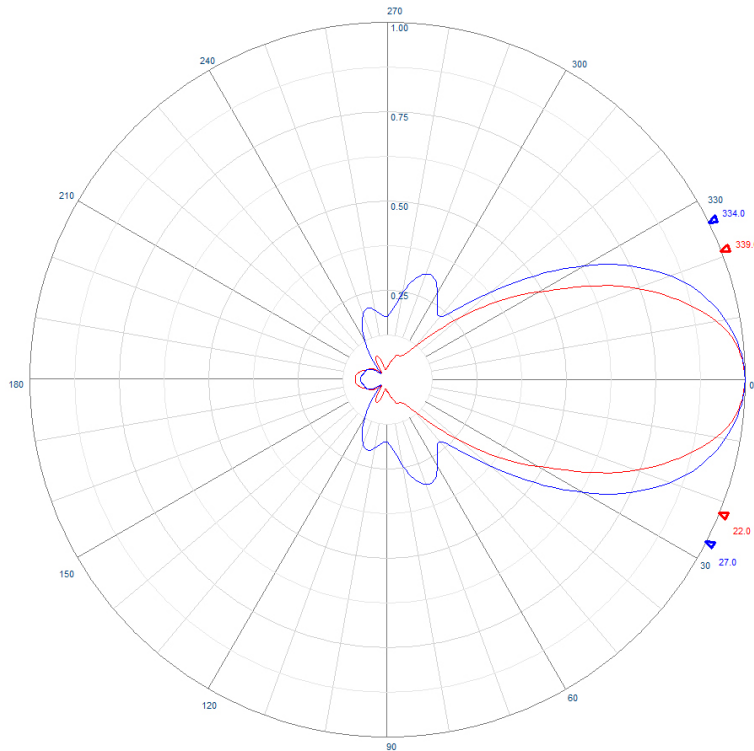




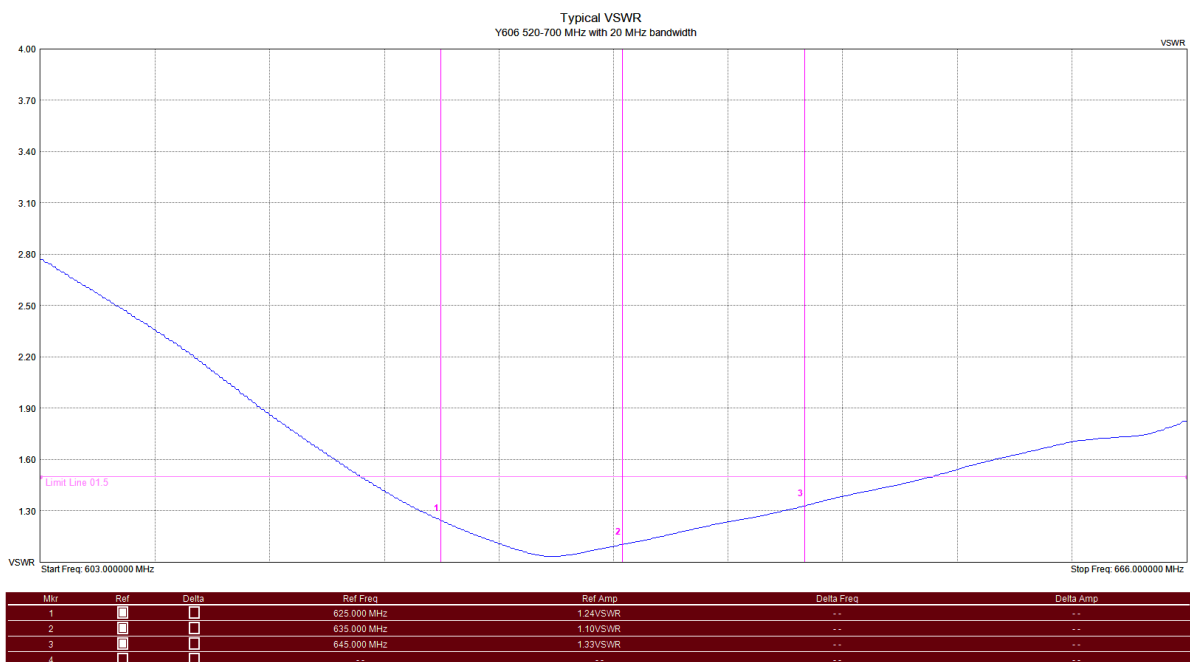
Y600 Series Yagi

Square boom custom frequency Yagi Antenna

UHF 520-700 MHz



Example radiation pattern - Y606



Typical VSWR - Y606 scaled at 625-645 MHz



Y600 Series Yagi

Square boom custom frequency Yagi Antenna

UHF 520-700 MHz



Suitable mounting hardware

	<p>SKU: A48 Galvanised steel right-angle for 25mm RHS 30-50mm mount pole</p>		<p>SKU: S48 304 stainless steel right-angle for 25mm RHS 30-50mm mount pole</p>
	<p>SKU: A48-65 Galvanised steel Right-angle for 25mm RHS 50-65mm mount pole</p>		<p>SKU: S48-76 304 stainless steel right-angle for 25mm RHS 60-75mm mount pole</p>
	<p>SKU: S48-90 304 stainless steel Right-angle for 25mm RHS 70-90mm mount pole</p>		<p>SKU: A48-tilt Galvanised steel Right-angle for 25mm RHS 30-50mm mount pole with 14 deg tilt allowance</p>
	<p>SKU: YS1-48 For 9-15 element Yagi's Single tension strut support Includes Yagi and mount pole mounting hardware. Mount pole not supplied</p>		<p>SKU: YS2-48 For 9-15 element Yagi's Dual tension strut support Includes Yagi clamp, support boom, pole mounting hardware. Mount pole not supplied</p>

Suitable feeder coaxial cable

	<p>SKU: 7890 RU400 Solid copper conductor, low loss coaxial cable CNT-400 / LMR-400™ equivalent (* times microwave) SKU: 7890-3 - RU400-UF ultra flexible Available in 100m, 300m, 500m roll or alternatively request a custom cable assembly</p>		<p>SKU: NM-8226 N-type male crimp connector for RU400 low loss, solid conductor Tri-metal plated</p>
	<p>SKU: ZCG1250 1/2" corrugated shielding, foam dielectric coaxial cable SKU: ZCG1250SF - Helical, super flex. Available in per metre, 500m roll or alternatively request a custom cable assembly</p>		<p>SKU: NM1250 N-type male clamp connector for 1/2" flexible, corrugated shielded, coaxial cable SKU: NM1250SF - Helical, super flex. Tri-metal plated</p>