



## Y815SS-CP Series

### Directional circular polarised 15 element UHF TV Yagi

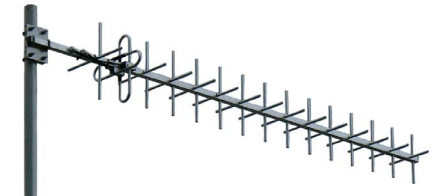
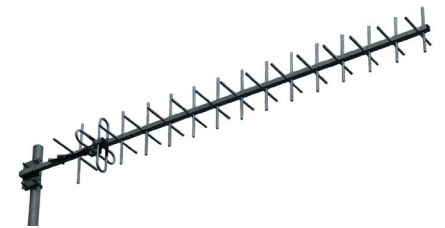
### UHF TV band IV and V 520-820MHz



The Y815SS-CP circular elliptical polarised UHF Yagi operates with 13.5 dBd gain in both horizontal and vertical planes. Transmission signals will therefore penetrate into the more obscure areas that a single plane antenna simply cannot.

Mounting hardware, coaxial feeder cable, connectors and other installation accessories are all available separately.

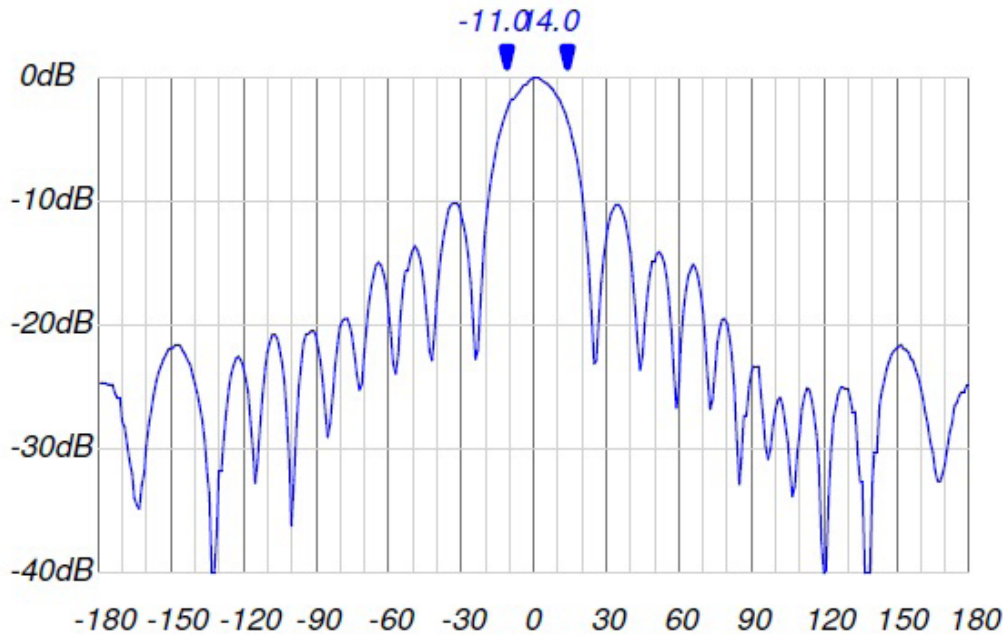
Construction	Fully-welded 304 stainless Steel
Frequency range	UHF 520-820MHz - Ch 28-52 Band IV & V (4 & 5)
Bandwidth	8 consecutive channels/ 60MHz, specify when ordering
VSWR	<1.3:1 across specified bandwidth
Tuning	Factory
Gain - nominal	13.5 dBd per plane at centre frequency
Polarisation	Right-hand circular elliptical
Maximum power	100 Watts
Impedance	50 Ohms
H Plane each plane	50°
E Plane each plane	46°
DC grounding	Yes
Front-to-back ratio	15 dB
Connector	N-type female on input of phasing harness supplied
Boom length	2.6 metres at 520MHz
Widest element	300mm at 520MHz
Weight	3.6kg
Projected area	0.078m
Wind load at 160kph	9.492kg, 0.093kN
Strut kit - recommended	YS1-48 - order separate
Mounting hardware	1 x A48-AM or 1 x S48-AM - order separate
Installation tools required	13mm spanner for bracket securing Amalgamation buytl rubber and PVC tape for connector sealing



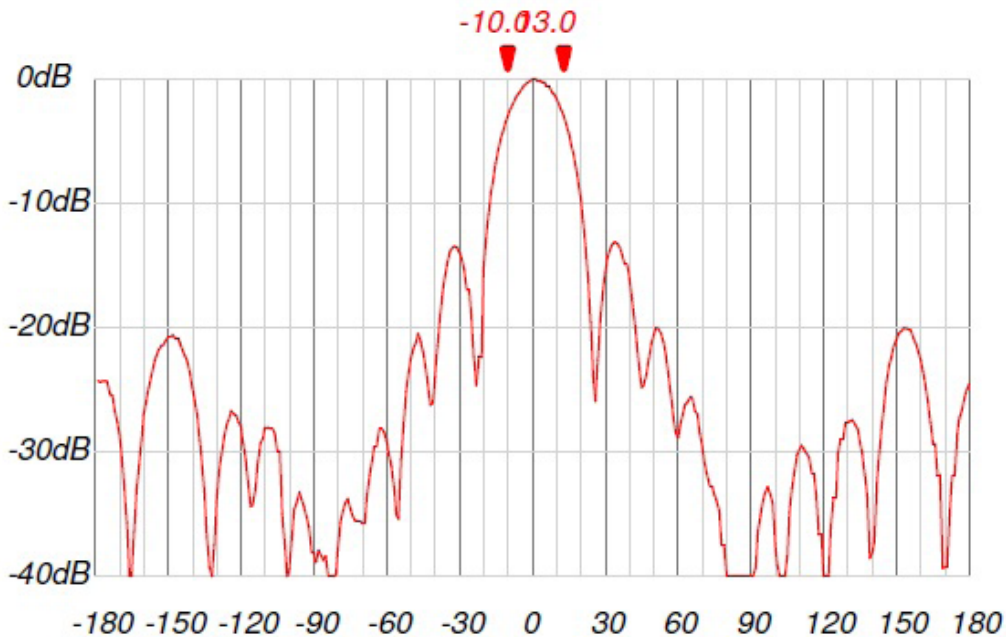


# Y815SS-CP Series

Directional circular polarised 15 element UHF TV Yagi  
UHF TV band IV and V 520-820MHz



Horizontal Radiation Pattern per plane - Cartesian



Vertical Radiation Pattern per plane - Cartesian




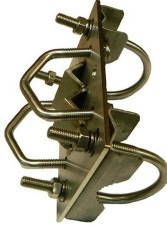

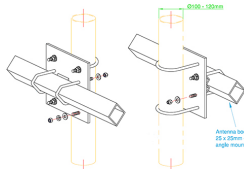
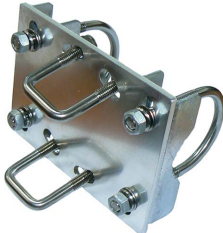


## Y815SS-CP Series

Directional circular polarised 15 element UHF TV Yagi  
UHF TV band IV and V 520-820MHz



### Suitable mounting hardware

 <p>S48 - stainless steel or A48 galvanised steel</p> <p>Right-angle for 25mm RHS 30-50mm mount pole</p>	 <p>S48-76 - stainless steel Right-angle for 25mm RHS 60-75mm mount pole</p> <p>A48-65 galvanised steel Right-angle for 25mm RHS 50-65mm mount pole</p>
 <p>S48-90 - stainless steel Right-angle for 25mm RHS 70-90mm mount pole</p>	 <p>S48-AM - stainless steel or A48-AM galvanised steel Right-angle +/- 45 deg Yagi mount for 25mm RHS 30-50mm mount pole</p>
 <p>S48-AM-76 - stainless steel or Right-angle +/- 45 deg Yagi mount for 25mm RHS, 60-75mm mount pole</p> <p>A48-AM-65 - stainless steel or Right-angle +/- 45 deg Yagi mount for 25mm RHS, 50-65mm mount pole</p>	 <p>S48-AM-120 - stainless steel or Right-angle +/- 45 deg Yagi mount for 25mm RHS, 100-120mm mount pole</p>
 <p>S48-tilt - stainless steel or A48-tilt galvanised steel</p> <p>Right-angle for 25mm RHS 30-50mm mount pole with 14 deg tilt allowance</p>	

### Suitable feeder coaxial cable

 <p>1/2" helical shielded, foam dielectric coaxial cable P/N ZCG1250SF</p> <p>Available in per metre, 500m roll or alternatively request a custom cable assembly</p>	 <p>N-type male clamp connector for 1/2" super flexible, helically shielded, coaxial cable</p> <p>P/N NM1250SF</p> <p>Tri-metal plated</p>
 <p>1/2" corrugated shielding, foam dielectric coaxial cable P/N ZCG1250</p> <p>Available in per metre, 500m roll or alternatively request a custom cable assembly</p>	 <p>N-type male clamp connector for 1/2" flexible, corrugated shielded, coaxial cable</p> <p>P/N NM1250</p> <p>Tri-metal plated</p>