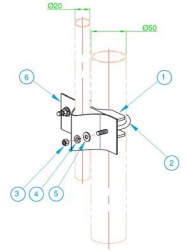


Parallel mast mount clamps

Page 1 of 2


In-stock
Ready to
Ship
*Build to order
item



SKU	EB1-SS
Construction	304 stainless steel
Boom diameter	20-40mm - round
Mast diameter	20-45mm - round
Orientation	Parallel 180°
Service	Light to medium-duty
Weight	380grams
2 clamps recommended for mounting	

SKU	UB3-SS
Construction	304 stainless steel
Boom diameter	20-32mm - round
Mast diameter	20-50mm - round
Orientation	Parallel 180°
Service	Light to medium-duty
Weight	450grams
Single clamp sufficient for mounting	

SKU	UB4-SS*
Construction	304 stainless steel
Boom diameter	20-32mm - round
Mast diameter	20-50mm - round
Orientation	Parallel 180°
Service	Light-duty
Weight	400grams
1-2 clamps recommended for mounting	



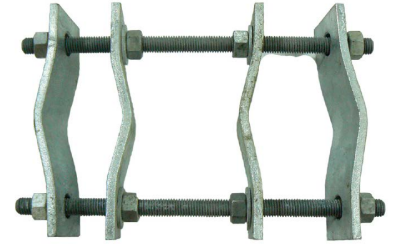
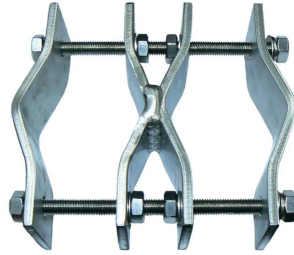
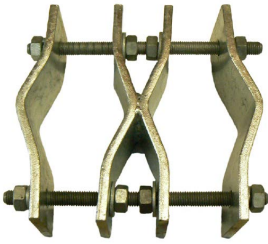
SKU	SB1
Construction	Galvanised mild steel
Boom diameter	48.4mm - round
Mast diameter	48.4mm - round
Orientation	Swivel 360°
Service	Medium-duty
Weight	1.7kg

SKU	SB4
Construction	Galvanised mild steel
Boom diameter	48.4mm - round
Mast mounting	Using M10 bolt
Orientation	360° mounting
Service	Medium-duty
Weight	1.7kg

Parallel mast mount clamps

Page 2 of 2

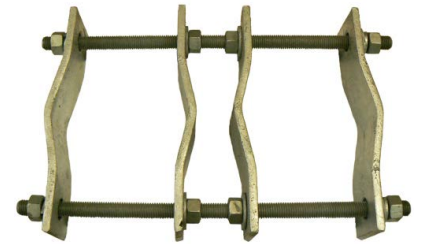
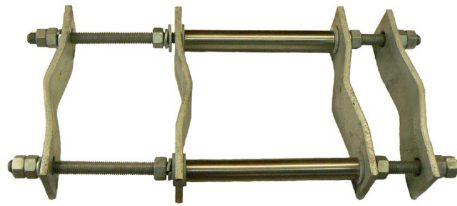
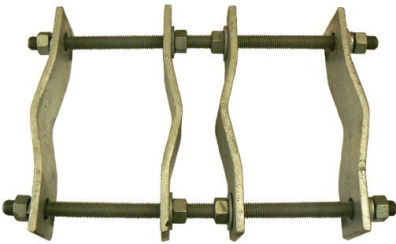
 **In-stock
Ready to
Ship**
*Build to order
item



SKU	UAM180L
Construction	Galvanised mild steel
Boom diameter	40-75mm - round
Mast diameter	40-75mm - round
Orientation	Parallel 180°
Service	Heavy-duty
Weight	1.8kg
2 clamps recommended for mounting	

SKU	UAM180L-SS316*
Construction	316 stainless steel
Boom diameter	40-75mm - round
Mast diameter	40-75mm - round
Orientation	Parallel 180°
Service	Heavy-duty
Weight	1.8kg
2 clamps recommended for mounting	

SKU	UAM180UNI
Construction	Galvanised mild steel
Boom diameter	40-75mm - round
Mast diameter	40-90mm - round
Orientation	Parallel 180°
Service	Heavy-duty
Weight	1.9kg
2 clamps recommended for mounting	



SKU	UAM180UNIL
Construction	Galvanised mild steel
Boom diameter	40-90mm - round
Mast diameter	60-115mm - round
Orientation	Parallel 180°
Service	Heavy-duty
Weight	2.1kg
2 clamps recommended for mounting	

SKU	UAM180UNI-42
Construction	Galvanised mild steel with 42mm stainless steel spacers
Boom diameter	40-90mm - round
Mast diameter	60-115mm - round
Orientation	Parallel 180°
Service	Heavy-duty
Weight	2.3kg
2 clamps recommended for mounting	

SKU	UAM180UNIL-48
Construction	Galvanised mild steel
Boom diameter	50-70mm - round
Mast diameter	115-155mm - round
Orientation	Parallel 180°
Service	Heavy-duty
Weight	2.5kg
2 clamps recommended for mounting	