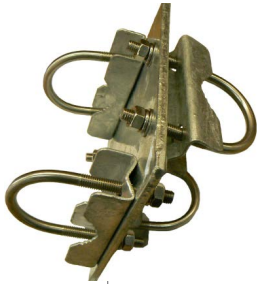


Right-Angle Heavy Duty Mast Mount Clamps

Page 1 of 3



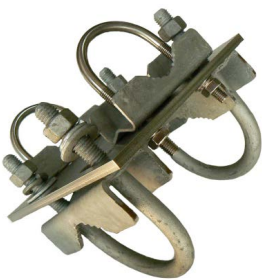
**In-stock
Ready to
Ship**
*Build to order
item



SKU	Y2300
Construction	Galvanised mild steel
Boom diameter	32-50mm - round
Mast diameter	30-50mm - round
Orientation	Right-angle 90°
Service	Heavy-duty
Weight	1.8kg



SKU	Y2300-SS
Construction	304 stainless steel
Boom diameter	32-50mm - round
Mast diameter	30-50mm - round
Orientation	Right-angle 90°
Service	Heavy-duty
Weight	1.7kg



SKU	Y2300L
Construction	Galvanised mild steel
Boom diameter	32-50mm - round
Mast diameter	40-70mm - round
Orientation	Right-angle 90°
Service	Heavy-duty
Weight	2.6kg



SKU	Y2300SS-L
Construction	304 stainless steel
Boom diameter	32-50mm - round
Mast diameter	30-70mm - round
Orientation	Right-angle 90°
Service	Heavy-duty
Weight	2.3kg



SKU	Y2300SS-XL
Construction	304 stainless steel
Boom diameter	32-50mm - round
Mast diameter	70-90mm - round
Orientation	Right-angle 90°
Service	Heavy-duty
Weight	2.4kg

Right-Angle Heavy Duty Mast Mount Clamps

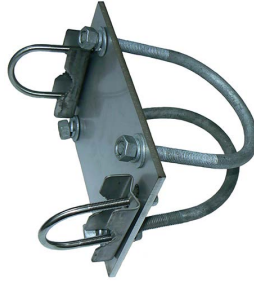
Page 2 of 3



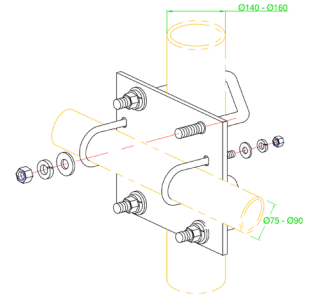
**In-stock
Ready to
Ship**
*Build to order
item



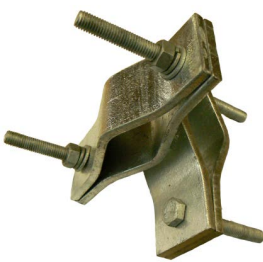
SKU	C-115
Construction	Galvanised mild steel
Boom diameter	32-50mm - round
Mast diameter	115mm - round
Orientation	Right-angle 90°
Service	Heavy-duty
Weight	3.5kg



SKU	C-125
Construction	Galvanised mild steel
Boom diameter	32-50mm - round
Mast diameter	140mm - round
Orientation	Right-angle 90°
Service	Heavy-duty
Weight	3.5kg



SKU	C-169
Construction	304 stainless steel and galvanised large U-bolts
Boom diameter	30-50mm - round
Mast diameter	100-120mm - round
Mounting orientation	Right-angle 90°
Weight	3.5kg



SKU	UAM90L
Construction	Galvanised mild steel
Boom diameter	40-75mm - round
Mast diameter	40-75mm - round
Orientation	Right-angle 90°
Service	Heavy-duty
Weight	1.7kg



SKU	UAM90LL
Construction	Galvanised mild steel
Boom diameter	60-115mm - round
Mast Diameter	60-115mm - round
Orientation	Right-angle 90°
Service	Heavy-duty
Weight	2.2kg



SKU	UAM90UNI
Construction	Galvanised mild steel
Boom diameter	40-70mm - round
Mast diameter	40-90mm - round
Orientation	Right-angle 90°
Service	Heavy-duty
Weight	1.9kg

Right-Angle Heavy Duty Mast Mount Clamps

Page 3 of 3


In-stock
Ready to
Ship
*Build to order
item



SKU	SB1
Construction	Galvanised mild steel
Boom diameter	48.4mm - round
Mast diameter	48.4mm - round
Orientation	Swivel 360°
Service	Medium-duty
Weight	1.7kg



SKU	SB2
Construction	Galvanised mild steel
Boom diameter	48.4mm - round
Mast diameter	48.4mm - round
Orientation	Set right-angle 90°
Service	Medium-duty
Weight	1.7kg



SKU	SB4
Construction	Galvanised mild steel
Boom diameter	48.4mm - round
Mast mounting	Using M10 bolt
Orientation	360° mounting
Service	Medium-duty
Weight	1.7kg