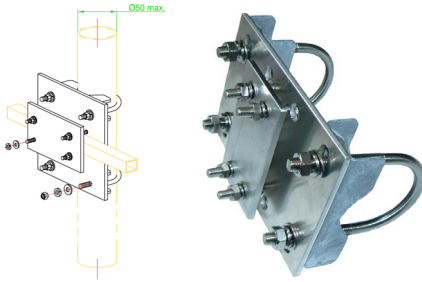


Yagi mounting clamps

Square boom or CP Yagi

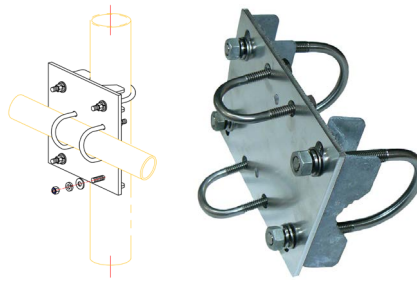
Page 1 of 3


In-stock
Ready to
Ship
*Build to order
item



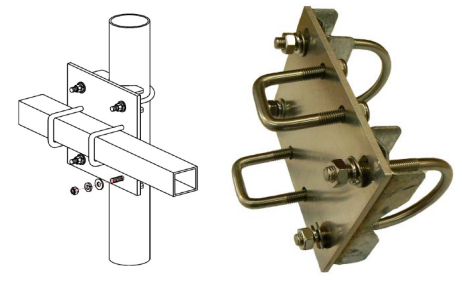
A12-7

Construction	Aluminium & 304 stainless steel U-bolts
Boom diameter	12.7mm - square
Mast diameter	30-50mm - round
Mounting orientation	Right-angle 90°
Weight	680grams



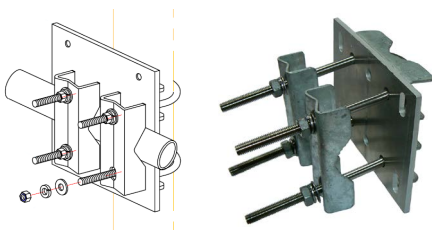
A20-R

Construction	Aluminium & 304 stainless steel U-bolts
Boom diameter	20mm - Round
Mast diameter	30-50mm - round
Mounting orientation	Right-angle 90°
Weight	680grams



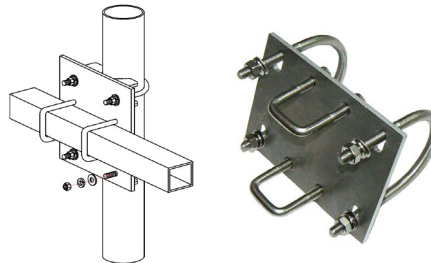
A48

Construction	Aluminium & 304 stainless steel U-bolts
Boom diameter	25mm - square
Mast diameter	30-50mm - round
Mounting orientation	Right-angle 90°
Weight	680grams



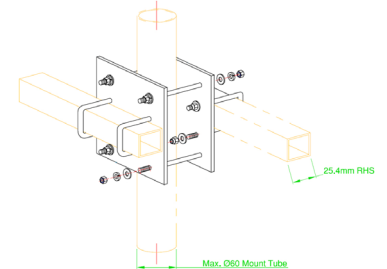
A48-R

Construction	Aluminium & 304 stainless steel U-bolts
Boom diameter	25mm - round
Mast diameter	30-50mm - round
Mounting orientation	Right-angle 90°
Weight	730grams



A48-65

Construction	Aluminium & 304 stainless steel U-bolts
Boom diameter	25mm - square
Mast diameter	50-65mm - round
Mounting orientation	Right-angle 90°
Weight	800grams



A48-65-BTB*

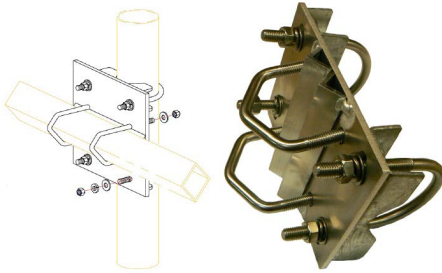
Construction	Aluminium & 304 stainless steel U-bolts
Boom diameter	2 x 25mm - square
Mast diameter	50-60mm - square or round
Mounting orientation	Right-angle 90°
Weight	1kg

Yagi mounting clamps

Square boom or CP Yagi

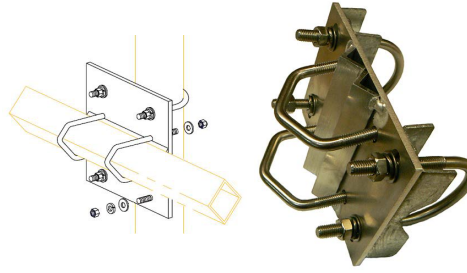
Page 2 of 2


In-stock
Ready to Ship
*Build to order item



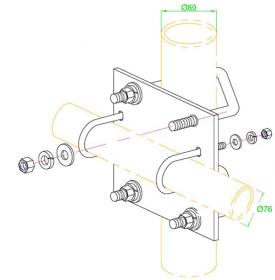
A48-AM

Construction	Aluminium & 304 stainless steel U-bolts
Boom diameter	25mm - cross polarised
Mast diameter	30-50mm - round
Mounting orientation	Right-angle 90°
Weight	820grams



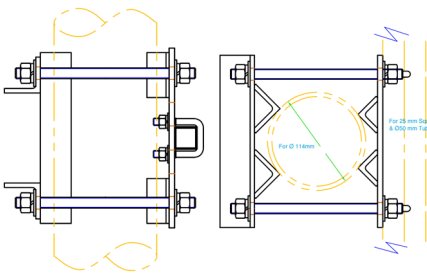
A48-65-AM*

Construction	Aluminium & 304 stainless steel U-bolts
Boom diameter	25mm - cross polarised
Mast diameter	50-65mm - round
Mounting orientation	Right-angle 90°
Weight	900grams



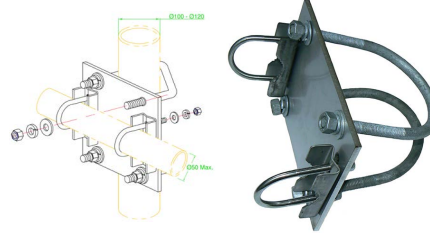
C976

Construction	Galvanised steel and stainless steel components
Boom diameter	60-76mm - round
Mast diameter	70-89mm - round
Mounting orientation	Right-angle 90°
Weight	4.0kg



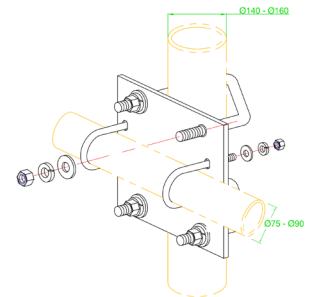
C1218

Construction	Galvanised steel and stainless steel components
Boom diameter	25mm - square
Mast diameter	100-114mm - round
Mounting orientation	Right-angle 90°
Weight	4.8kg



C-125

Construction	304 stainless steel and galvanised large U-bolts
Boom diameter	30-50mm - round
Mast diameter	100-120mm - round
Mounting orientation	Right-angle 90°
Weight	3.5kg



C169

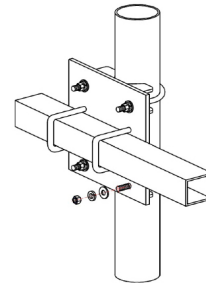
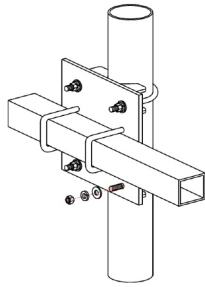
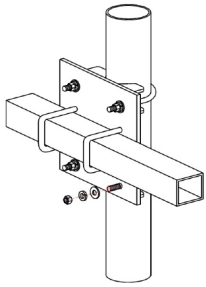
Construction	304 stainless steel and galvanised large U-bolts
Boom diameter	30-50mm - round
Mast diameter	100-120mm - round
Mounting orientation	Right-angle 90°
Weight	3.5kg

Yagi mounting clamps

Square boom or CP Yagi

Page 3 of 3


In-stock
Ready to
Ship
*Build to order
item



S48

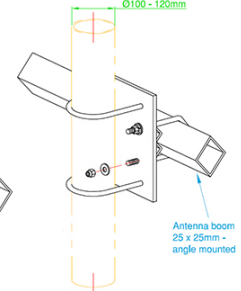
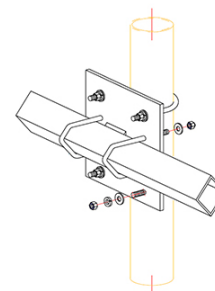
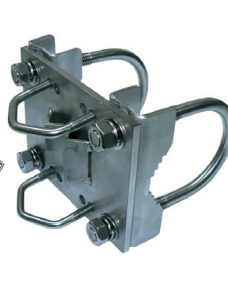
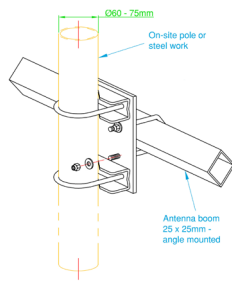
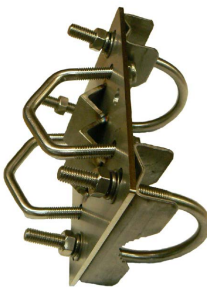
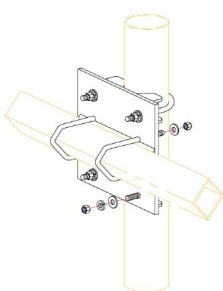
Construction	304 stainless steel plate & U-bolts
Boom diameter	25mm - square
Mast diameter	30-50mm - round
Mounting orientation	Right-angle 90°
Weight	750grams

S48-76

Construction	304 stainless steel plate & U-bolts
Boom diameter	25mm - square
Mast diameter	50-76mm - round
Mounting orientation	Right-angle 90°
Weight	2.0kg

S48-90

Construction	304 stainless steel plate & U-bolts
Boom diameter	25mm - square
Mast diameter	70-90mm - round
Mounting orientation	Right-angle 90°
Weight	2.2kg



S48-AM

Construction	304 stainless steel plate & U-bolts
Boom diameter	25mm - cross polarised
Mast diameter	30-50mm - round
Mounting orientation	Right-angle 90°
Weight	1.5kg

S48-76-AM*

Construction	304 stainless steel plate & U-bolts
Boom diameter	25mm - cross/dual polarised
Mast diameter	60-75mm - round
Mounting orientation	Right-angle 90°
Weight	1.94kg

S48-120-AM*

Construction	304 stainless steel plate & U-bolts
Boom diameter	25mm - cross/dual polarised
Mast diameter	100-120mm - round
Mounting orientation	Right-angle 90°
Weight	2.2kg