



ZWG-CA10A-40

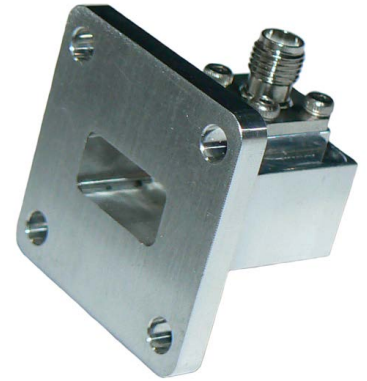
Coaxial Attenuator

SHF DC-26.5GHz



Design Features:

- High RF Performance
- Suitable for Military, space and commercial applications
- Available with a wide range of coaxial terminations.
- Available in alternate frequencies, please consult ZCG for more information.



	Freq. Range	Insertion Loss Max	VSWR Max	Connector type Waveguide	Connector type Coaxial	CW Power	Peak power	Temp. (C)
ZWG-WR62A-SF	DC~26.5GHz	0.2	1.15:1	WR62 (BJ140)	SMA female	50 Watts	3 Kilowatts	-55~+85

