

Coaxial Circulators

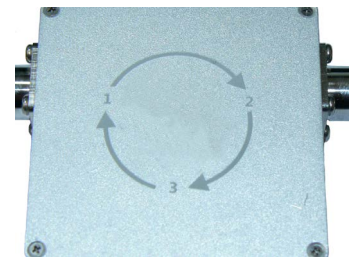
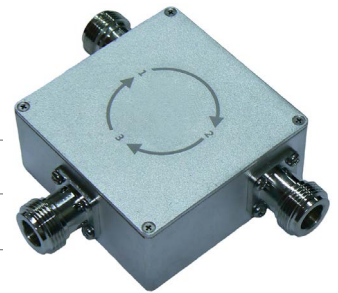
N-type female terminated

FM Radio, VHF Airband or VHF/UHF



- Suitable for military, aeronautical or commercial applications
- Can be dual junction or tri-junction for high isolation - request when ordering
- High RF performance in a small profile

SKU	ZCI108NF*	ZCI108NF-500	ZCI137NF*	ZCI174NF	ZCI400NF
Construction	Anodised aluminium outer case and nickel plated terminations				
Frequency range	87.5-108 MHz		118-137 MHz	136-174 MHz	225-400 MHz
Tuning	Factory				
Insertion loss - maximum	0.6 dB	0.8 dB	0.5 dB		0.8-1.0 dB
Isolation	20 dB	17 dB	20 dB		16-18 dB
VSWR - maximum	1.25:1	1.35:1	1.2:1	1.25:1	1.35:1
Forward power - maximum	100 Watts	500 Watts	100 Watts	200 Watts	120 Watts
Return power - maximum	100 Watts	500 Watts	100 Watts	200 Watts	120 Watts
Connectors -input/output	N-type female				
Dimensions	W: 60.0mm L: 60.0mm H: 28.0mm	W: 100mm L: 100mm H: 40mm	W: 60.0mm L: 60.0mm H: 28.0mm		W: 53.0mm L: 77.0mm H: 26.0mm
Working temperature	-20°C ~ +65°C	0°C ~ +70°C	-30°C ~ +70°C		-40°C ~ +85°C
Installation	Connect terminations as per identification sticker on face of isolator				



Typical Configuration

Port 1: Input
Port 2: Output
Port 3: Dummy load

* denotes a 200 or 500 Watt model is available upon request, see below for order number, specify when ordering.

Order Code	Frequency range	Maximum power
ZCI108NF-200	87.5-108 MHz - FM radio	200 Watts
ZCI137NF-200	118-137 MHz - VHF Airband	200 Watts